



Hayden C. Blodgett

Spring 2026 Graduate Portfolio
Tulane University School of Architecture + Built Environment
New Orleans, Louisiana

Hayden C. Blodgett

M. Arch Tulane University, 2026

B.S. Arch Georgia Institute of Technology, 2024

Contact:

hblodgett@tulane.edu

hayden.blodgett@gmail.com

Table of Contents

Tulane University

Comprehensive-Integrated Studio

ARCH 6032, Spring 2025, Instructors: Kentaro Tsubaki & Cynthia Dubberley

Graduate Thesis: From Post-Disaster to Paradise: Finding the Future of the Lower Ninth Ward

ARCH 6990, Spring 2026, Director: Iñaki Alday, Co-Director: Sean Fowler

Graduate Research Studio: New Orleans Public Space Project

ARCH 6051, Fall 2025, Instructors: Sean Fowler & Iñaki Alday

Graduate Studio 1: Architectural Symbiosis

ARCH 6031, Fall 2024, Instructors: Ammar Eloueini & Mostafa Akbari

Georgia Institute of Technology

Senior Capstone Studio: ASCA Timber in the City Competition

ARCH 4017, Spring 2024, Instructor: Charles Rudolph

Junior Studio 1: Flourishing Communities Partnership

ARCH 3016, Fall 2022, Instructor: Julie Kim

HOSTEL ON THE GREEN

ARCH 6032, Comprehensive Studio

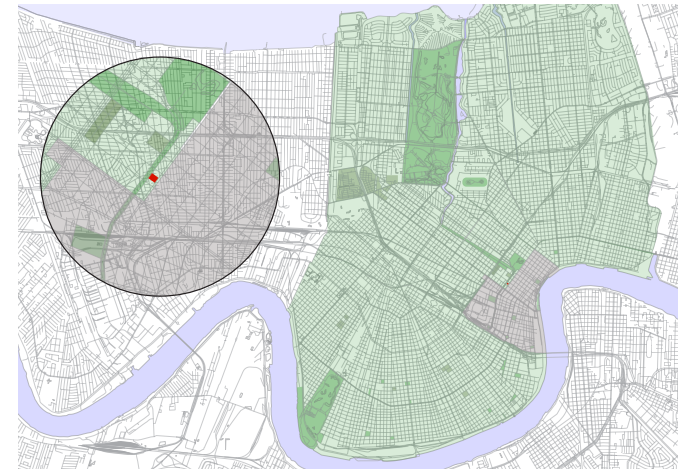
Instructors: Kentaro Tsubaki & Cynthia Dubberley

Tulane University School of Architecture, New Orleans, LA

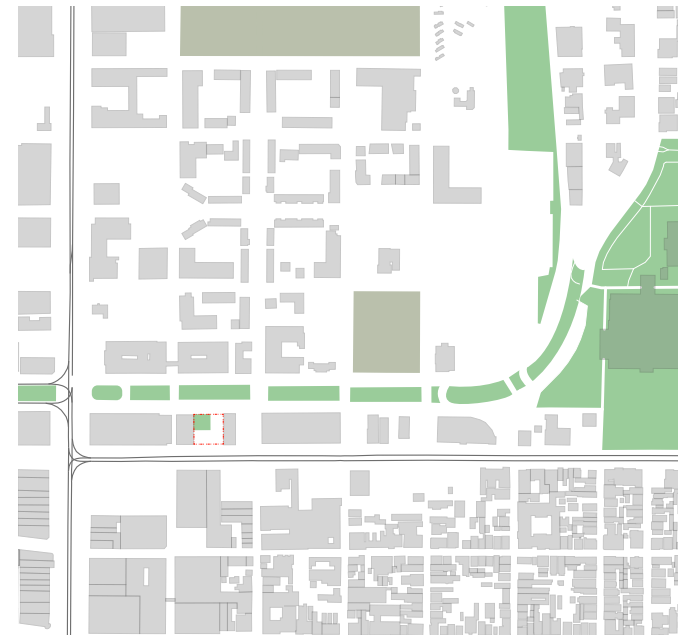
Located at the intersection of the French Quarter, Central Business District, and the Tremé, the N Rampart/Basin St site is uniquely positioned within the city to offer guests access to both the highly urbanized and bustling city of New Orleans that tourists expect as well the quiet, highly vegetated neighborhoods that the majority of New Orleanians call home.

On the urban side of the city, the site faces into the French Quarter, giving guests walkable access to the majority of tourism-based businesses between Rampart St and the Mississippi River, as well as city-wide transit options such as buses and streetcars. On the green side of the city, the site fronts Basin St, which has one of the widest vegetated neutral grounds in the city. The Elk Pl Promenade runs from Union Passenger Terminal to Canal Street, leaving a 300ft divide between the end of the promenade and the trail-head for the Lafitte Greenway, which stretches from the intersection of Basin St and Armstrong Park to Bayou St. John and City Park. This project proposes a connection between the Lafitte Greenway and the Promenade via a proposed Basin Street Greenway, which has native vegetation, rain gardens, and walking/biking trails will enhance the eco-urban conditions of the tri-neighborhood intersection by addressing key socio-environmental issues such as urban heat, storm-water related flooding, and access to greenspace.

The L-shaped hostel is envisioned as two guest wings connected by a “communal living room” of interior public spaces, which is formally/materially distinct from the brick guest wings by the presence of planter-lined balconies and fully opening operable walls. The primary frontage of the L-shape is along the more urban-themed N Rampart St side of the building, with a “pocket park” created along the Basin St side of the site to connect to the re-imagined greenway. Formally, the guest wings of the hostel are informed by the formal languages, materiality, and scale of the neighboring buildings along N Rampart St, Canal St, and within the French Quarter, which the open communal living room programmed with spaces that offer views to either side of the city, as well as views through from one side to the other.



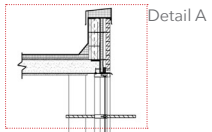
Site positioning between “Green” and “Urban” NOLA



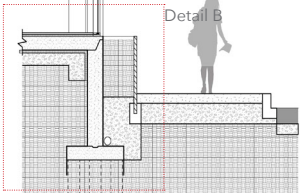
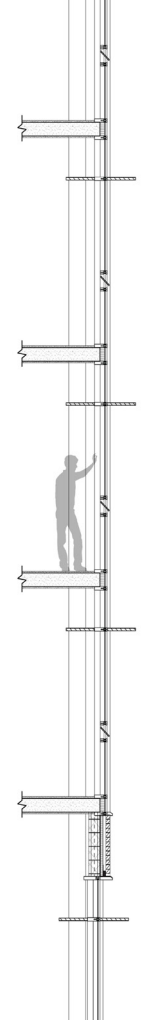
Site along proposed Basin Street Greenway



Bird's Eye View
N Rampart St

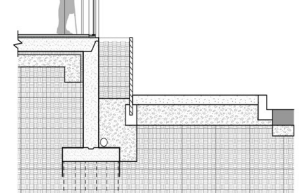
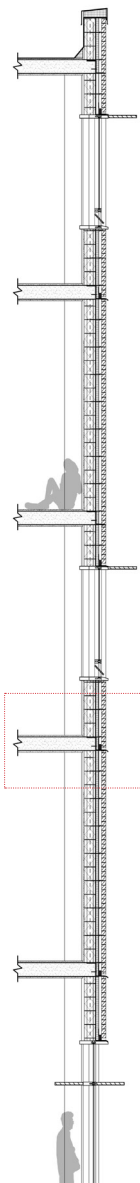


Detail A



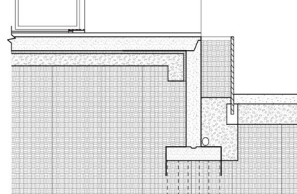
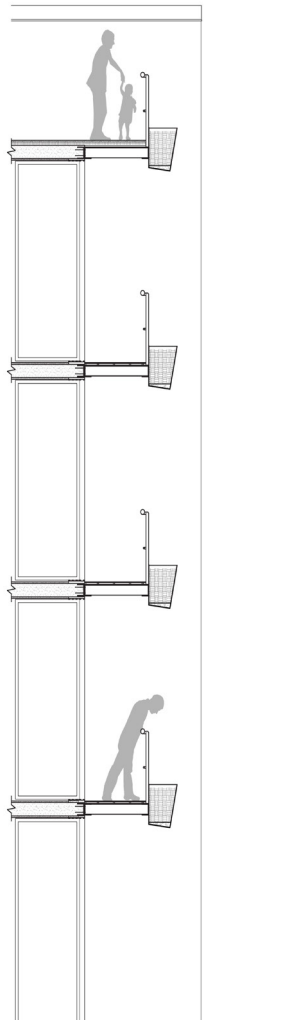
Detail B

Section A: Curtain Wall Section

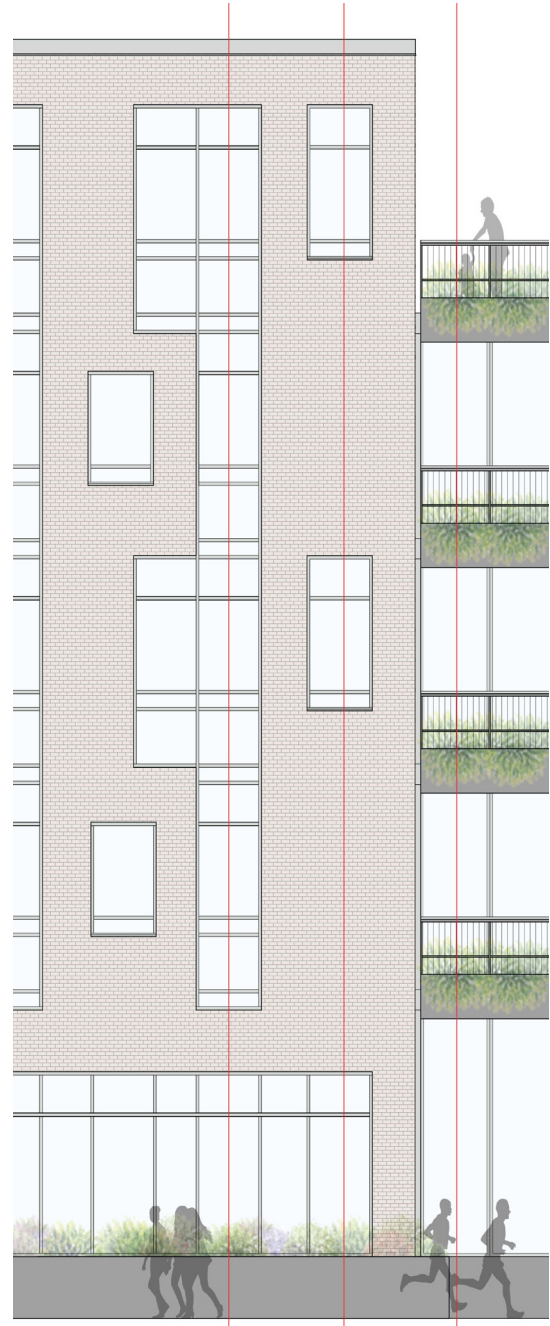


Detail C

Section B: Punched Windows



Section C: Retractable Wall/Balcony

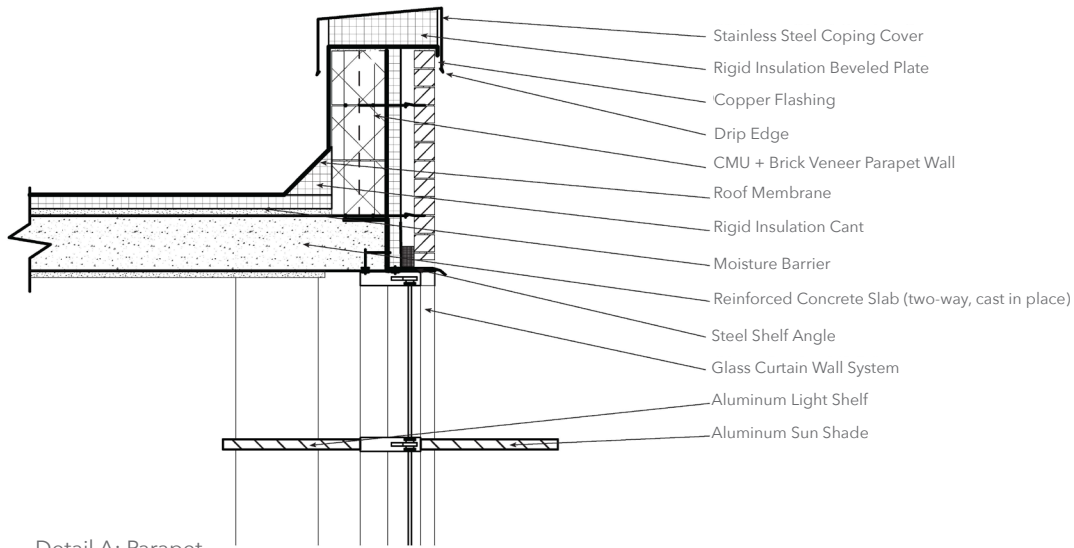


Section A

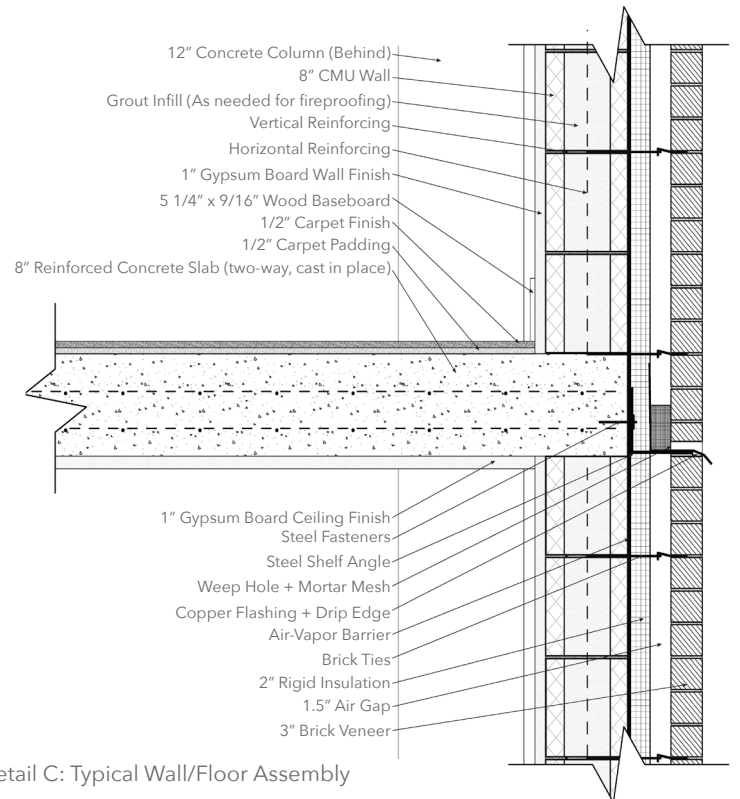
Section B

Section C

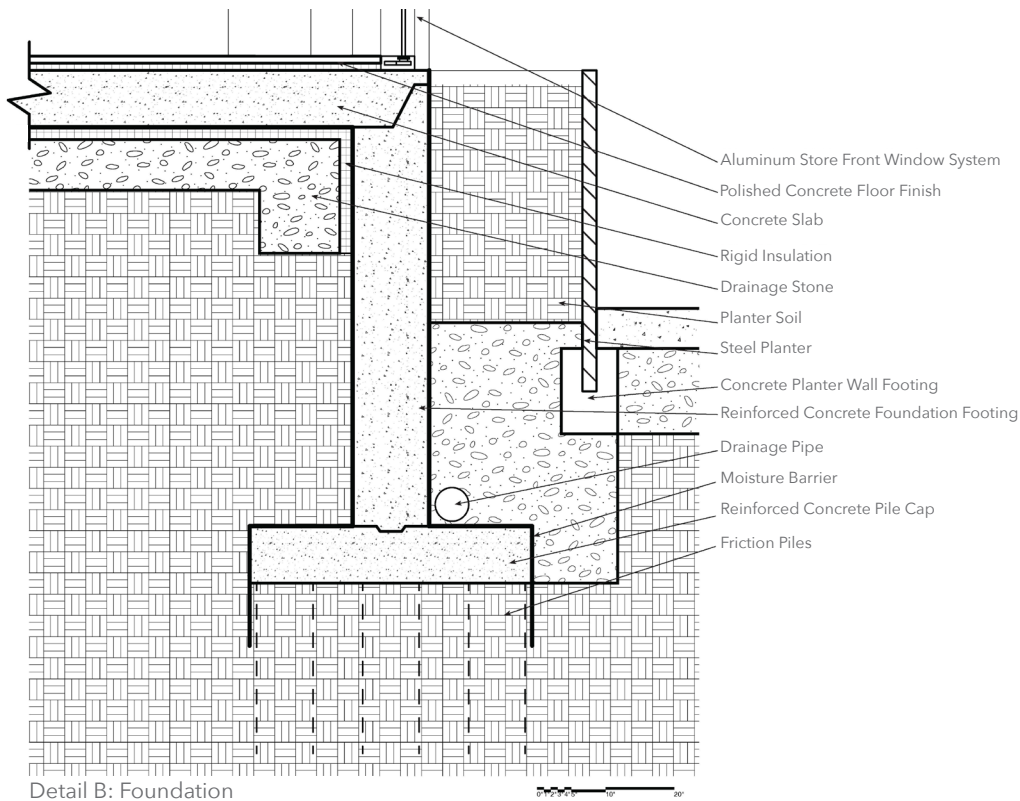
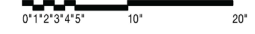
Partial Elevation (Rampart St)



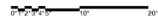
Detail A: Parapet

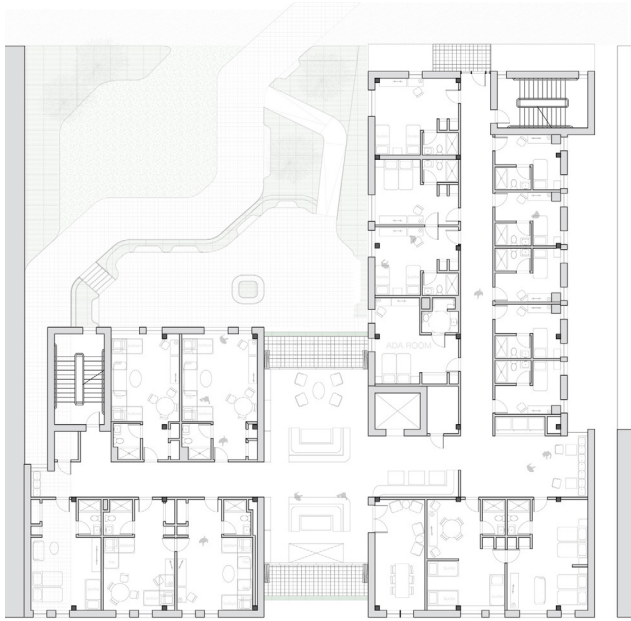


Detail C: Typical Wall/Floor Assembly



Detail B: Foundation

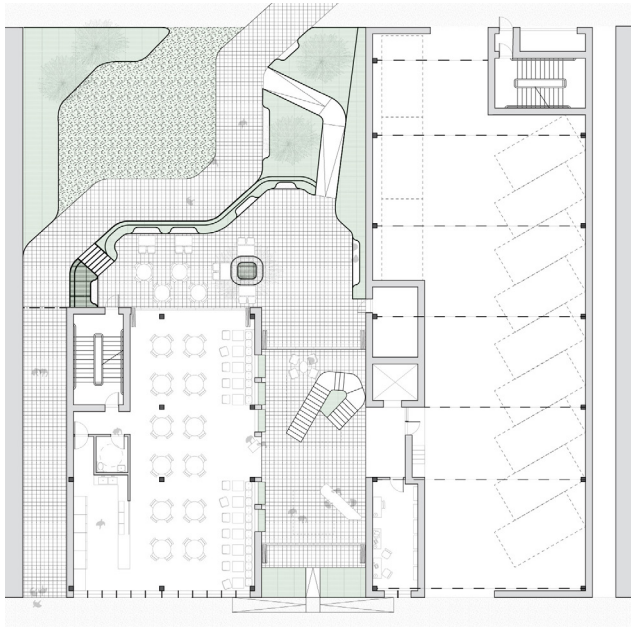




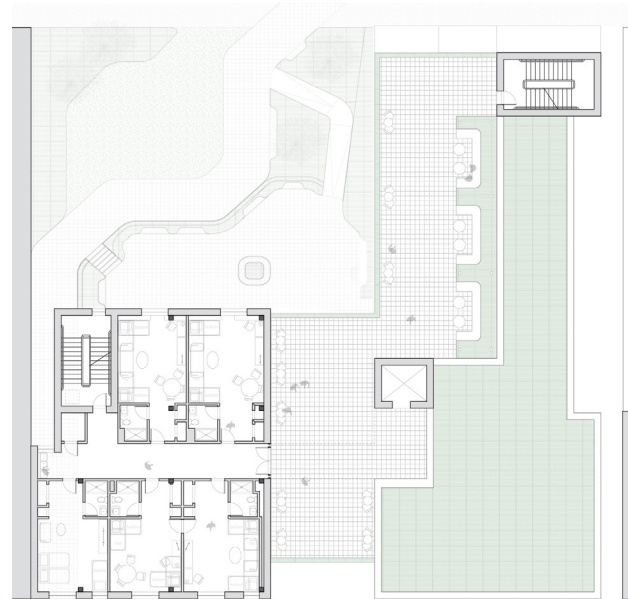
Typical Guest Floor



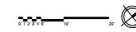
Typical RCP



Ground Floor + Pocket Park



Rooftop Terrace + Green Roof





Rampart St Approach



Pocket Park from Basin Greenway



Entry Lobby + Restaurant Area



Six-Sleeper Guest Room

FROM POST-DISASTER TO PARADISE: Finding the Future of the Lower Ninth Ward

ARCH 6099, Graduate Thesis

Director: Iñaki Alday, Co-director: Sean Fowler

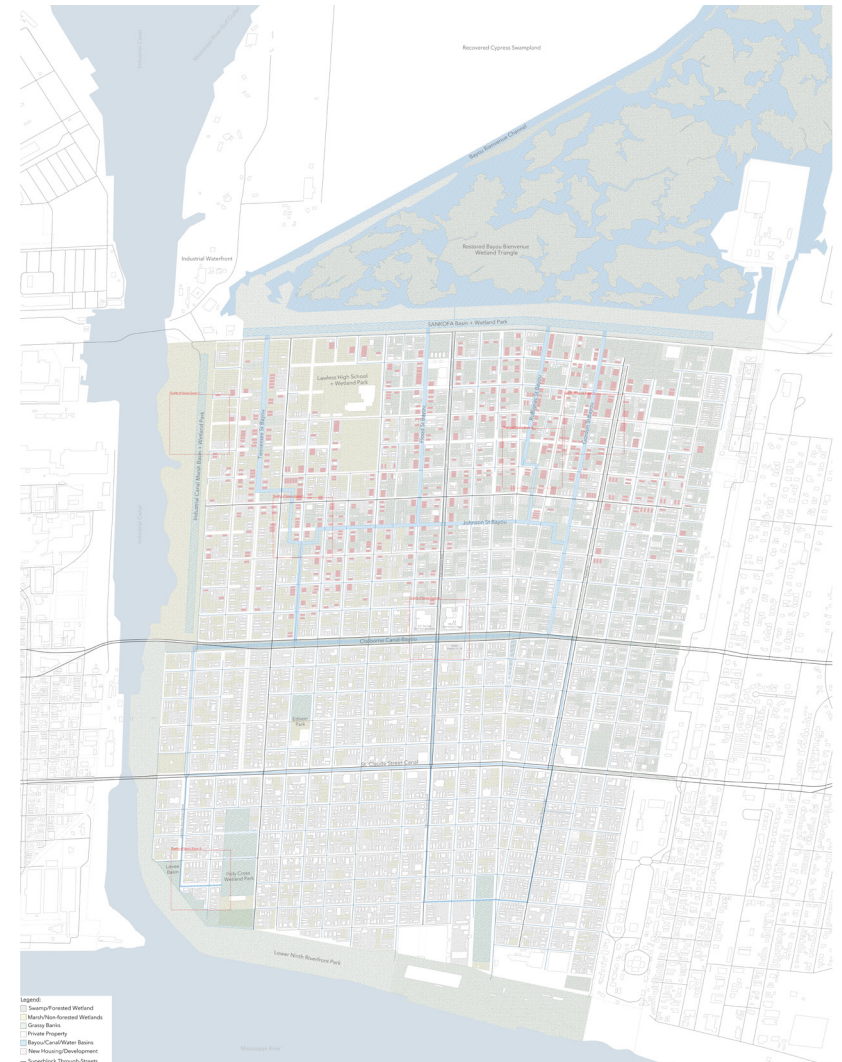
Tulane University School of Architecture, New Orleans, LA

Two decades since Hurricane Katrina in 2005, the city of New Orleans has reached a new homeostasis. In much of the city, day-to-day life closely resembles pre-Katrina conditions, but this is not the case in the Lower Ninth Ward, where devastating infrastructure failures flooded the neighborhood and destroyed 100% of housing stock. Despite longstanding rebuilding efforts, the neighborhood maintains a chronic vacancy of 54% (compared to 17% pre-Katrina), and all previous endeavors have failed to recover the essence of the vibrant, close-knit, community that existed historically in the neighborhood. Under the new status quo, the conditions of disinvestment, sparse population, and social/ecological blight have left residents of the Lower Ninth Ward with a precarious quality of life.

This thesis answers the question, “How can the Lower Ninth Ward be adapted from a precarious, unrecovered area to a resilient neighborhood that is a great place to live?” by taking a landscape driven approach to enhancing social, economic, and ecological sustainability. By drawing on the many precedents of bayou living throughout Louisiana, this thesis recovers the ecological function of various native wetland ecosystems and improves quality of space through the integration of a constructed canal-bayou network into the neighborhood. This approach is a recovery of the existing bayou ecosystems which have historically defined life in the Lower Ninth Ward and set it apart from other New Orleans neighborhoods. The bayou network will improve the socio-ecological function of the area by providing armature for new housing, increased social services, improved neighborhood drainage, and other ecosystem system services which will allow the Lower Ninth Ward to evolve beyond post-disaster stagnation into a more paradisiacal place to live.

- * Thesis Received Formal Commendation, Tulane University
- * Selected for Presentation at CriticalMASS Graduate Symposium

Unified Plan for Lower Ninth Ward Recovery





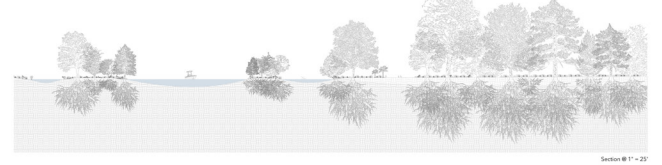
Morning on the Tupelo St Bayou

Bayou-Living Typology Study

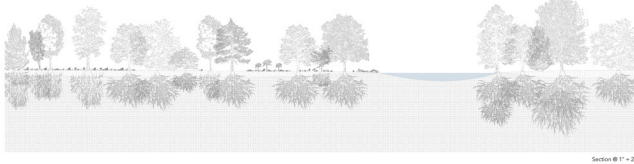
Liberty Bayou - Slidell, LA (1)



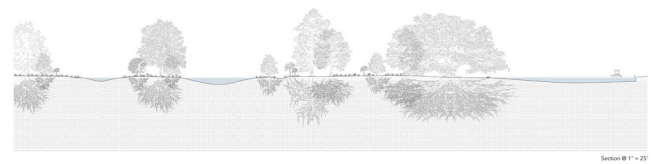
Liberty Bayou - Slidell, LA (2)



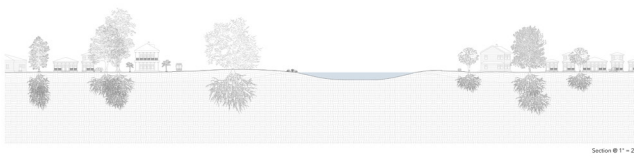
Liberty Bayou - Slidell, LA (3)



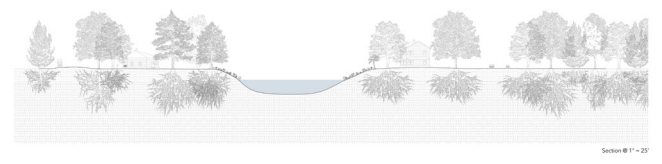
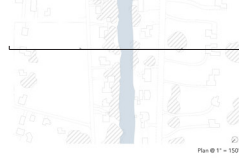
Liberty Bayou - Slidell, LA (4)



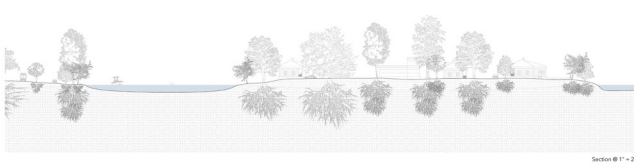
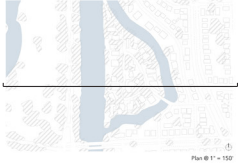
Bayou St. John - New Orleans, LA



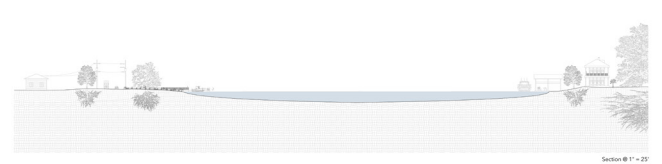
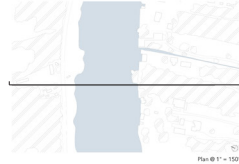
Bayou Lafourche - Napoleonville, LA



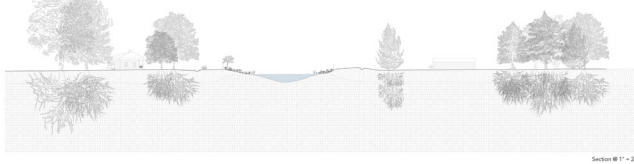
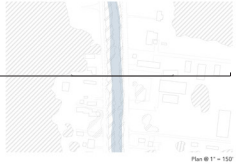
Bayou St. John - New Orleans, LA



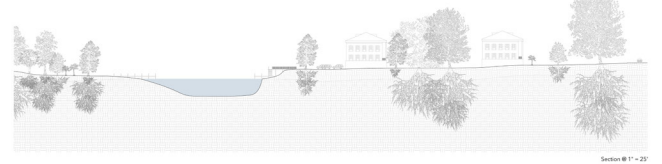
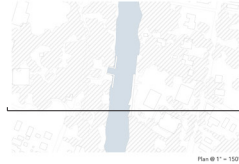
Bayou Barataria - Jean Lafitte, LA



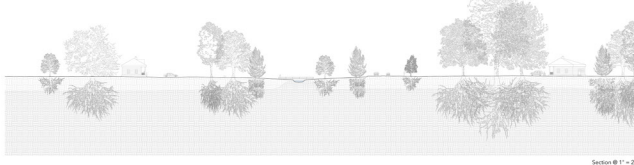
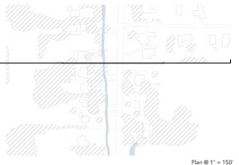
Bayou Black - Gibson, LA



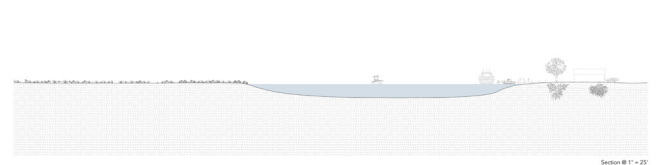
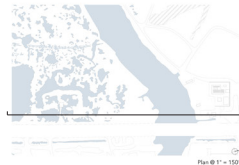
Bayou Teche - New Iberia, LA



Little Bayou Black - Houma, LA



Bayou Bienvenue - Chalmette, LA



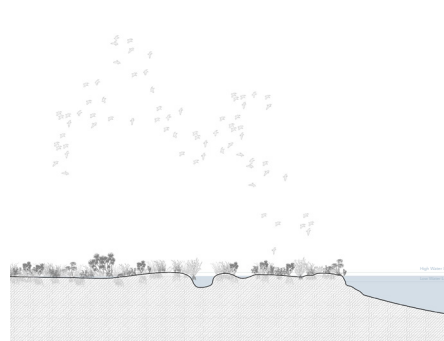
Bayou Edge Condition Photo Montage



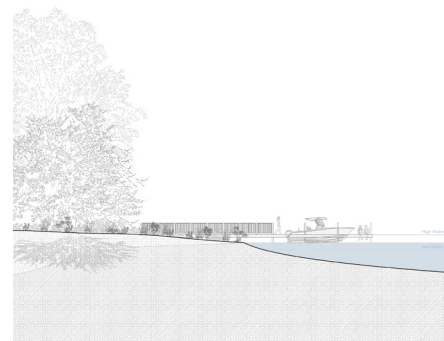
Bayou Edge Condition Taxonomy



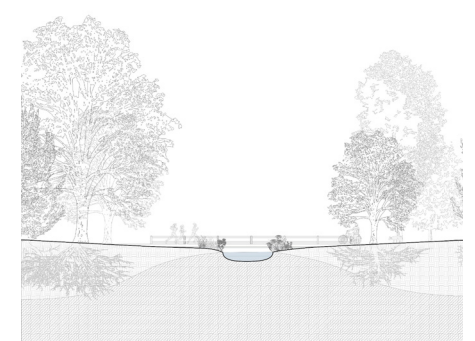
Condition 1: Wild Swamp



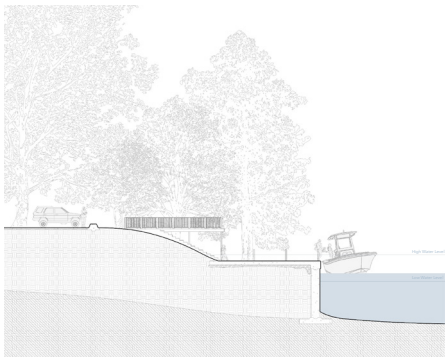
Condition 2: Wild Marsh



Condition 3: Small Dock/Boat House



Condition 4: Bridge Over Small Channel



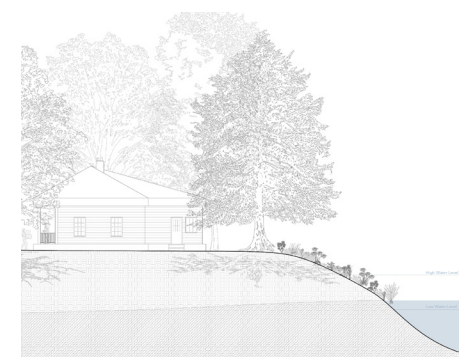
Condition 5: Heavy Dock/Marina



Condition 6: Public Bank

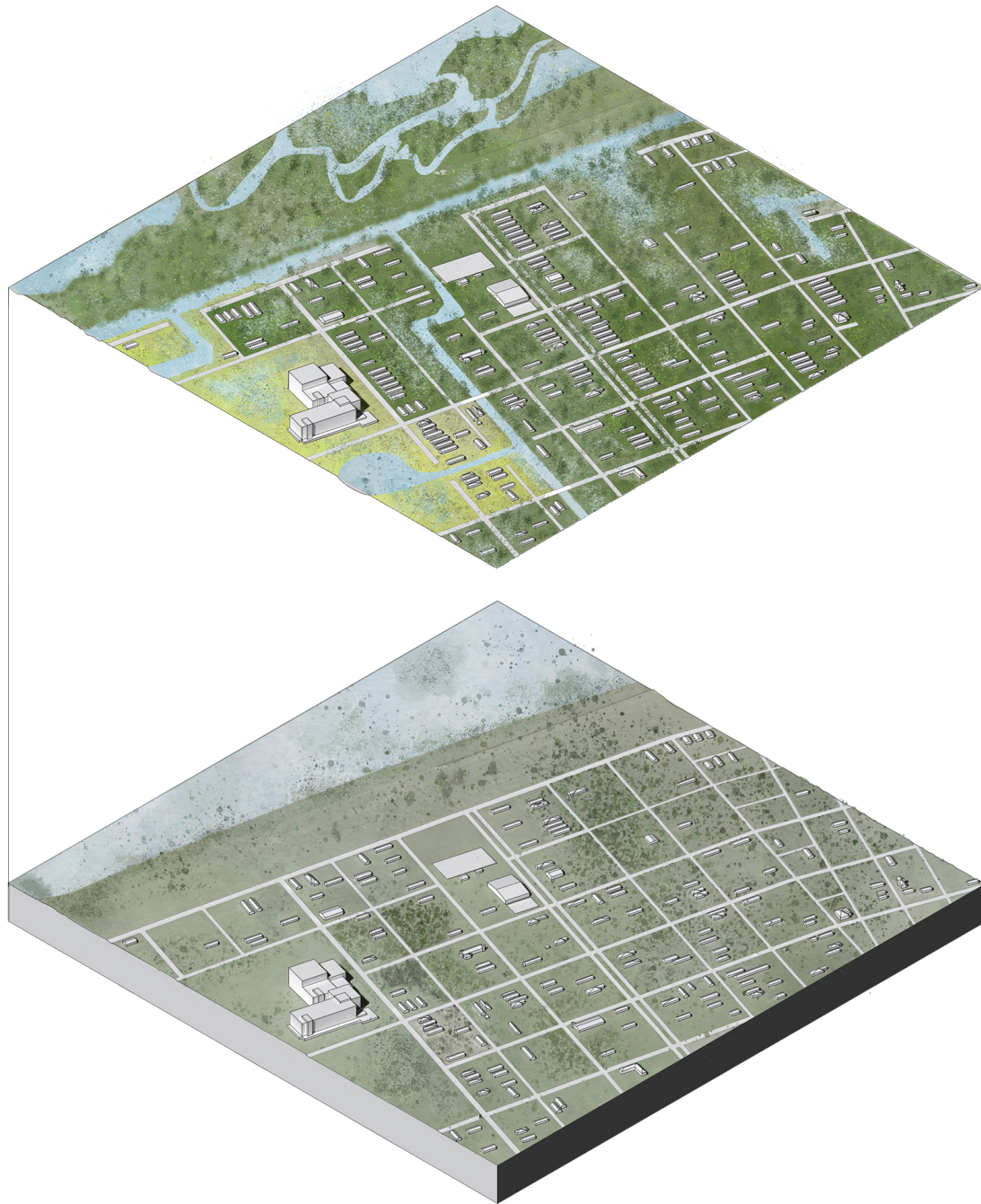


Condition 7: Right of Way Bank



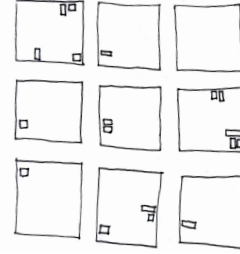
Condition 8: Private Bank

Current + Paradise Condition Exploded Axon

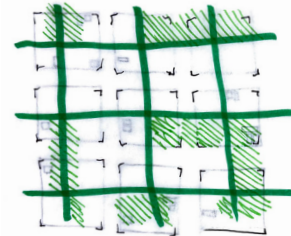


Development of Unified Neighborhood Systems

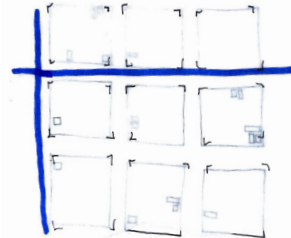
Base Condition: Depopulated Urban Grid



Layer 1: Offset Green Grid



Layer 2: Implementation of Through Streets + Super-blocks



Layer 3: Implementation of Canal-Bayou Network



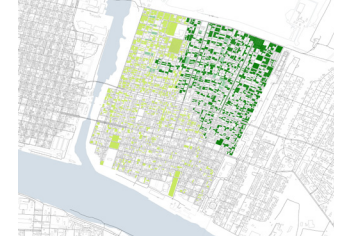
Layer 4: Strategic Repopulation of Grid



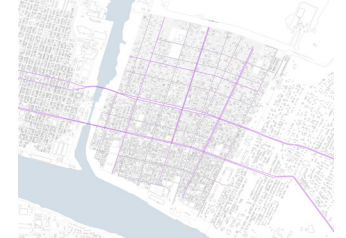
Base Condition: Depopulated Urban Grid



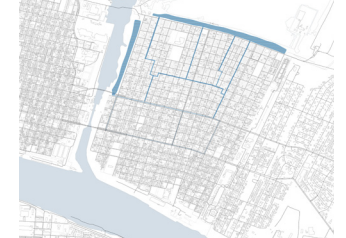
Layer 1: Offset Green Grid (Marsh + Swamp Ecosystems)



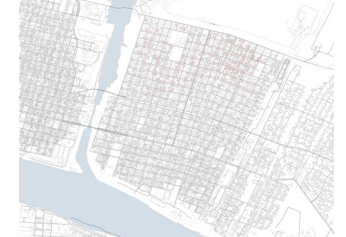
Layer 2: Implementation of Through Streets + Super-blocks



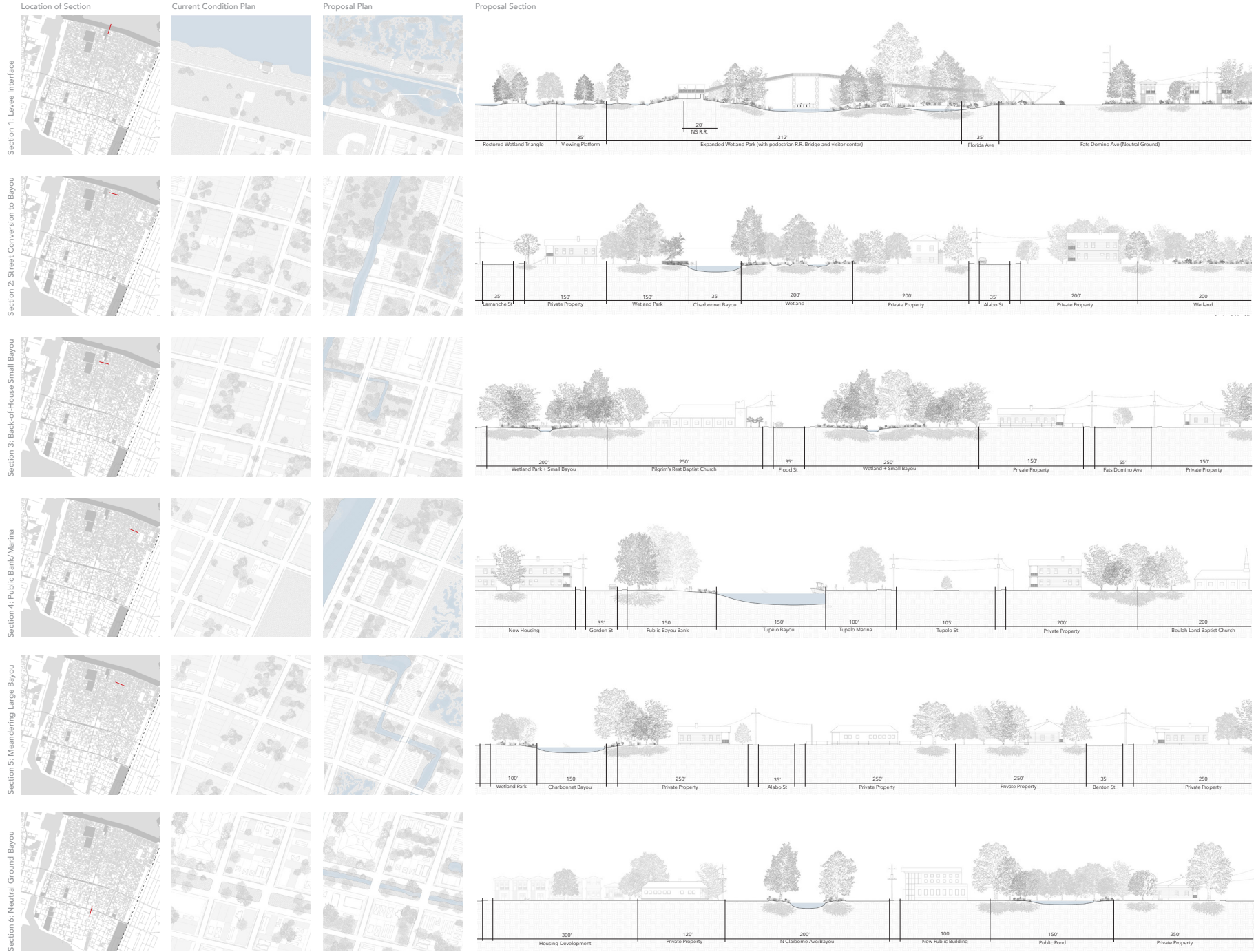
Layer 3: Implementation of Canal-Bayou Network



Layer 4: Strategic Repopulation of Grid



Lower Ninth Ward Bayou Implimentation + Neighborhood Quality of Space Explorations



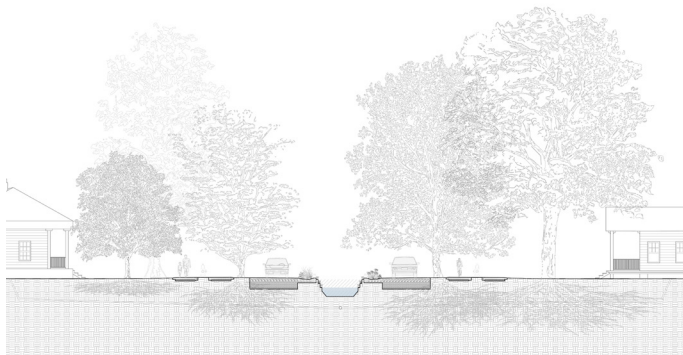
New Lower Ninth Ward Sponge Streets



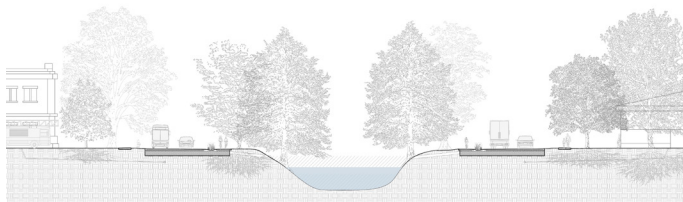
Typical Sponge Street



Neutral Ground Sponge Street - Swamp Plantings



Sponge Street + Minor Street Canal (on high ground)



Sponge Street + Major Canal-Bayou (at or below sea level)



Bayou Promenade



Bayou Promenade - Stormwater Drainage in Action



Afternoon along the Claiborne Canal-Bayou

HOLLYGROVE CANAL-BAYOU

ARCH 6051, Research Studio: New Orleans Public Space Project

Instructors: Sean Fowler & Iñaki Alday

Tulane University School of Architecture, New Orleans, LA

“The New Orleans Public Space Project proposes to examine the transformations needed in the city’s public space in order to address its long-term sustainability through the street network’s capacity to address water management, mobility changes, connectivity across neighborhoods, urban ecology, heritage revitalization, and relation with its main geographical features. The project is structured in four parts: Streets, mobility and water management, Barriers, disruptions and reconnections, Heritage streetscape recovery, City and river stitching.”

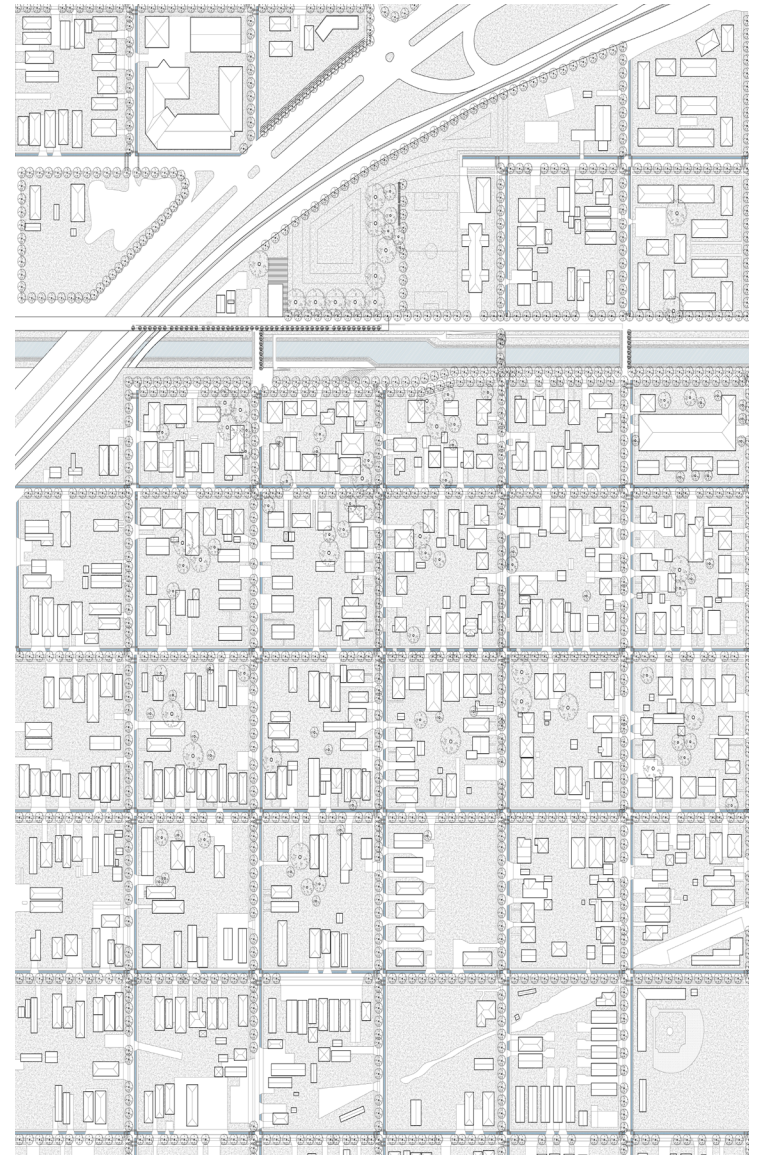
– Sean Fowler, *New Orleans Public Space Project*

For the “Barriers, Disruptions, and Reconnections” Phase of the New Orleans Public Space Project, the studio reimagines portions of city’s “rear-facing” infrastructure with legacies of community disruption. This project is a reinterpretation of the highly concretized Washington-Palmetto Drainage Canal as a highly vegetated canal-bayou linear park. The implementation of the linear park changes the canal from a barrier between neighborhoods into a connection between communities.

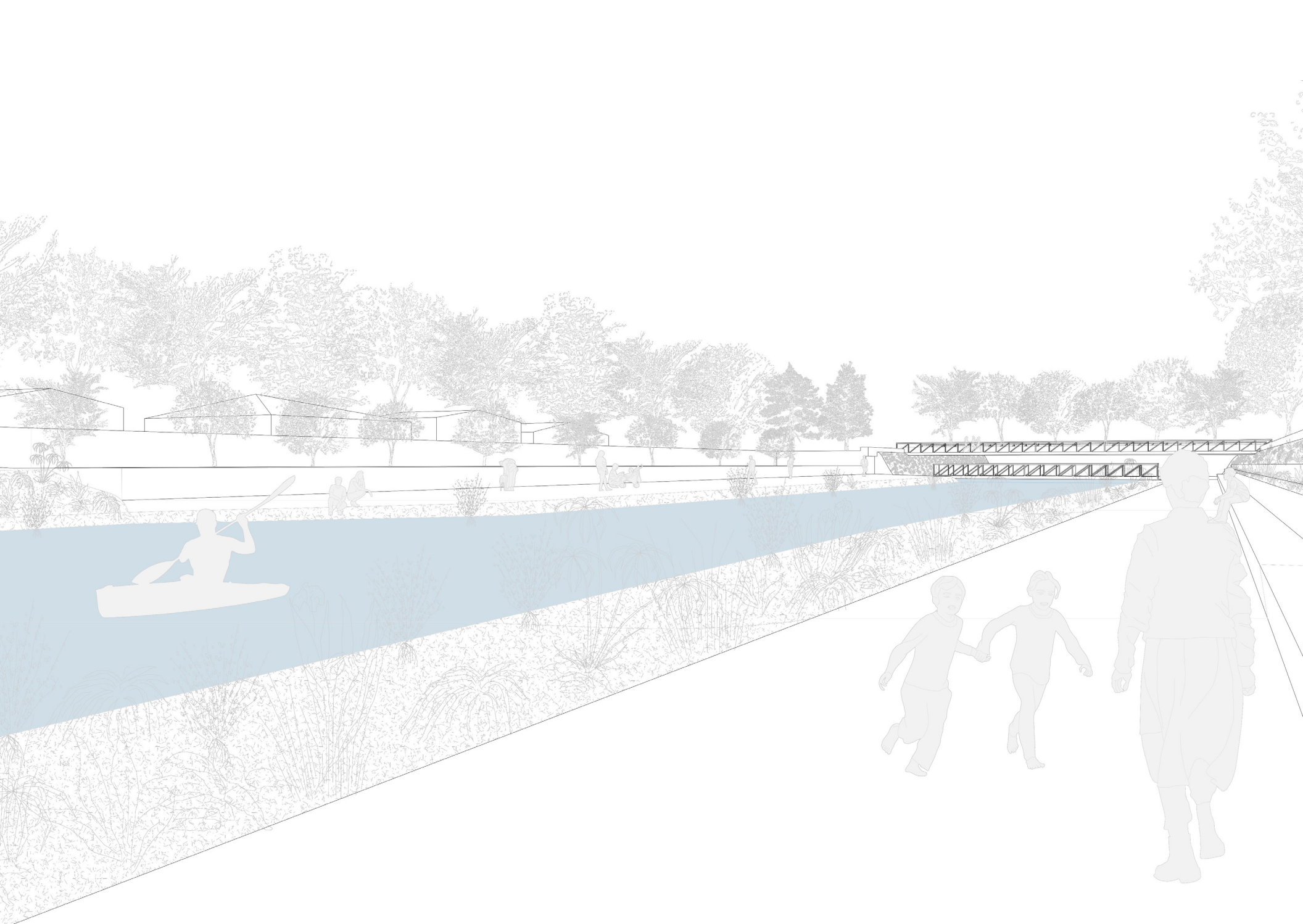
To sustain the bayou ecosystem, the sectional area of the canal must be decreased. The reduction in drainage capacity is offset by the implementation of “sponge streets” which allow water storage and natural percolation of rainwater into the ground, and additional drainage capacity is added through a new “water garden” which acts as a detention basin for additional stormwater.

With the implementation of these strategies, the ecological functions, drainage capacity, and overall quality of can be vastly improved across the city of New Orleans.

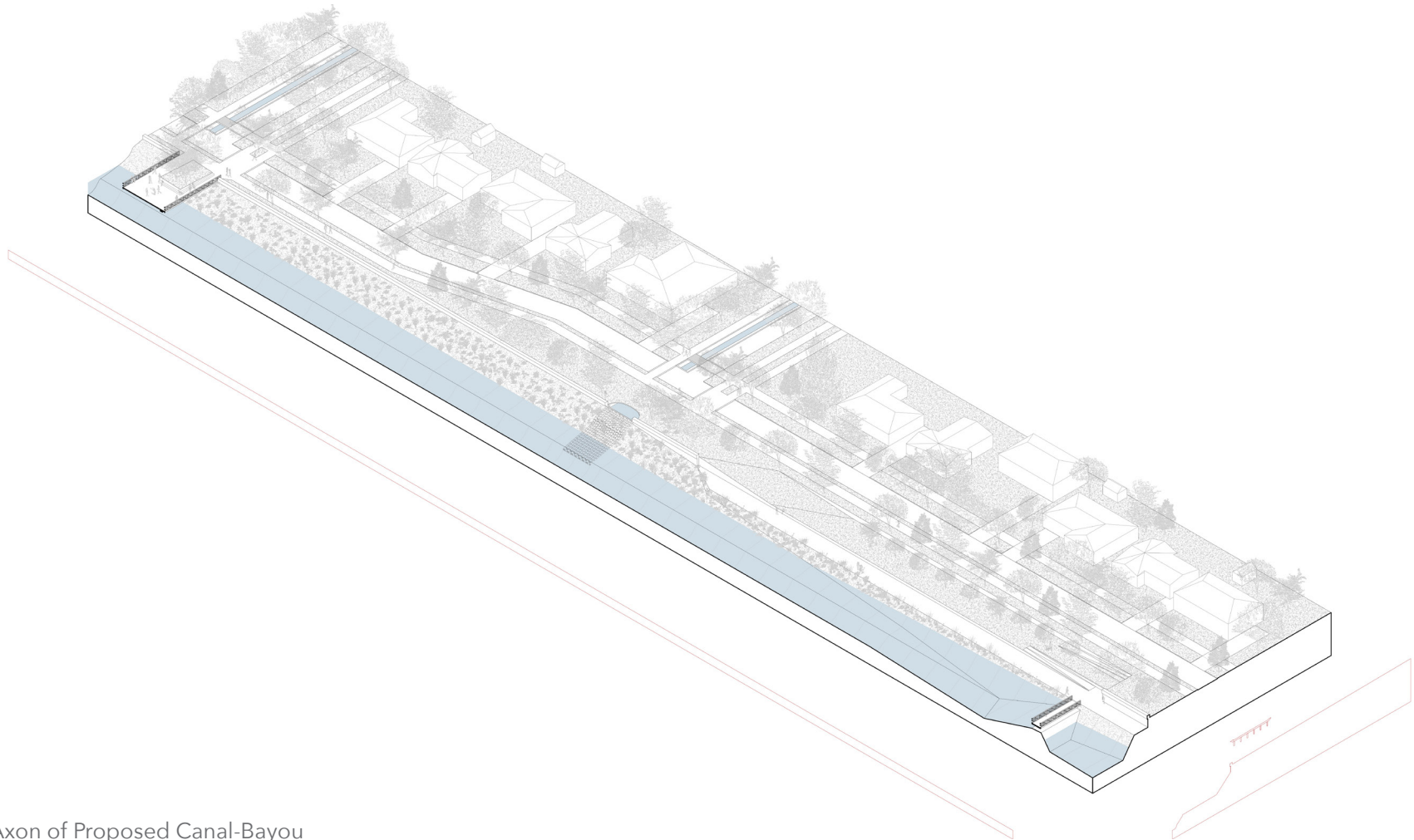
Co-Designer: Ari Solomon, B.Arch 2027



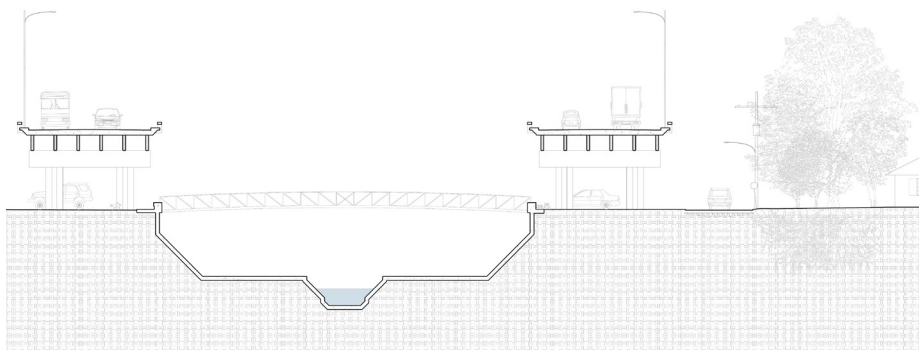
Site Plan with Canal-Bayou, Superblock, & Water Garden



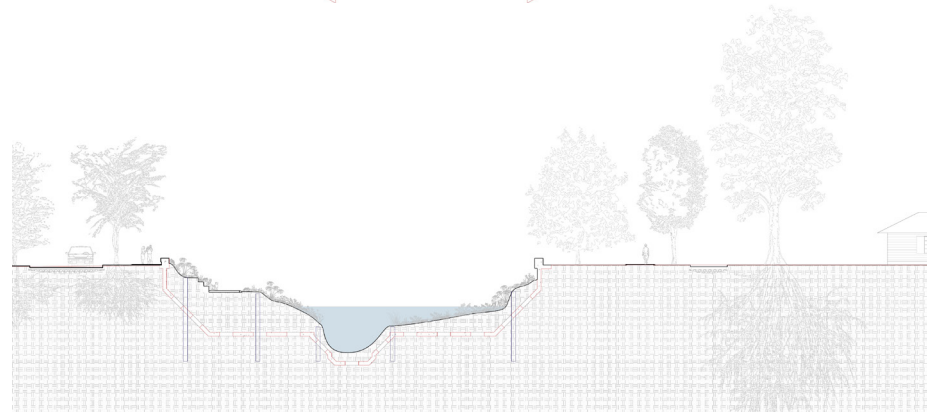
Walking path along Canal-Bayou



Section Axon of Proposed Canal-Bayou

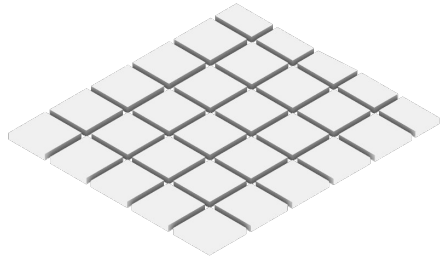


Existing Washington-Palmetto Canal Section

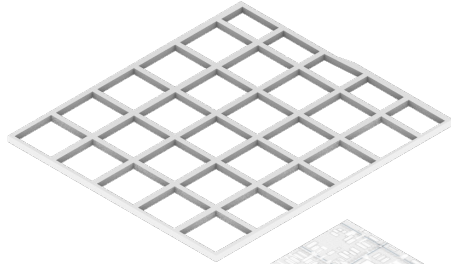


Proposed Canal-Bayou Section

Sponge Street Capacity



Private Block Area:
35 ac

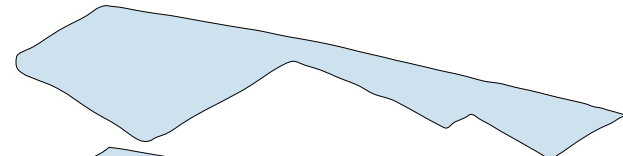


Sponge St Superblock:
Right of Way: 14ac
Water Storage: 253 ac in

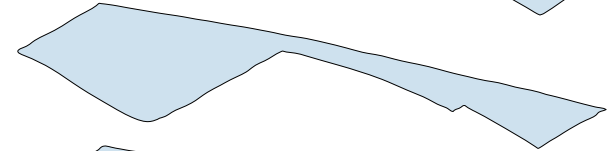


Anticipated Rainwater Storage
Capacity over site: 5"
(5" rainfall is roughly 1-in-5 storm)

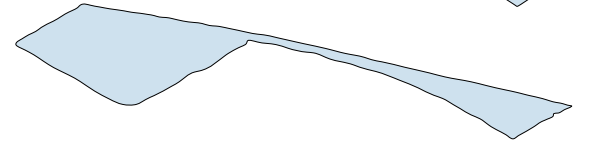
Water Garden Capacity Diagram



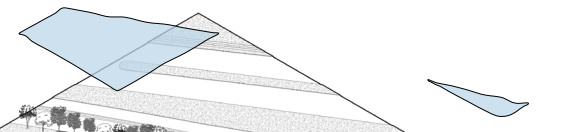
Level 5: 267,000 ft³



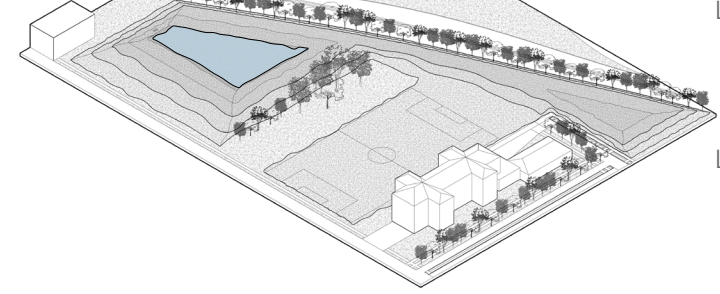
Level 4: 144,000 ft³



Level 3: 105,000 ft³

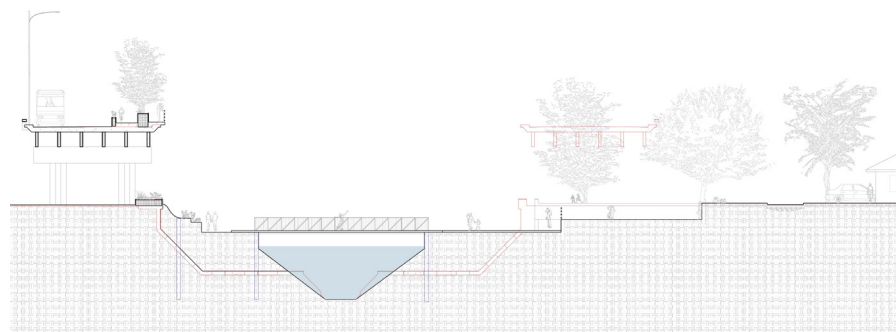


Level 2: 44,000 ft³

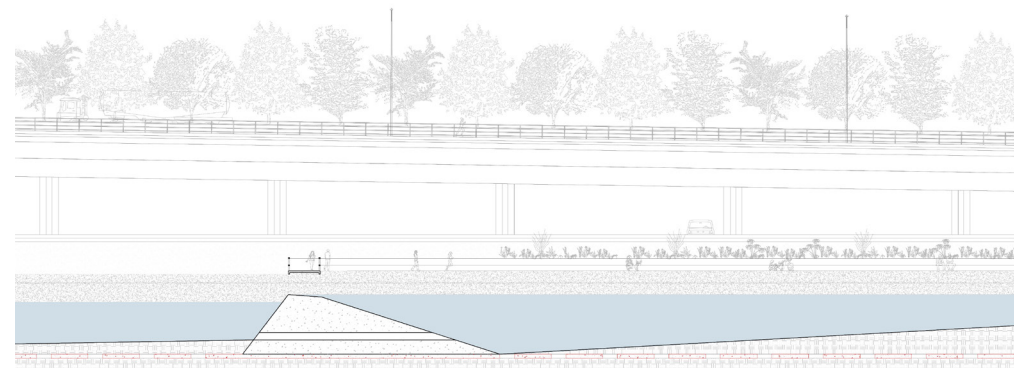


Level 1: 23,000 ft³

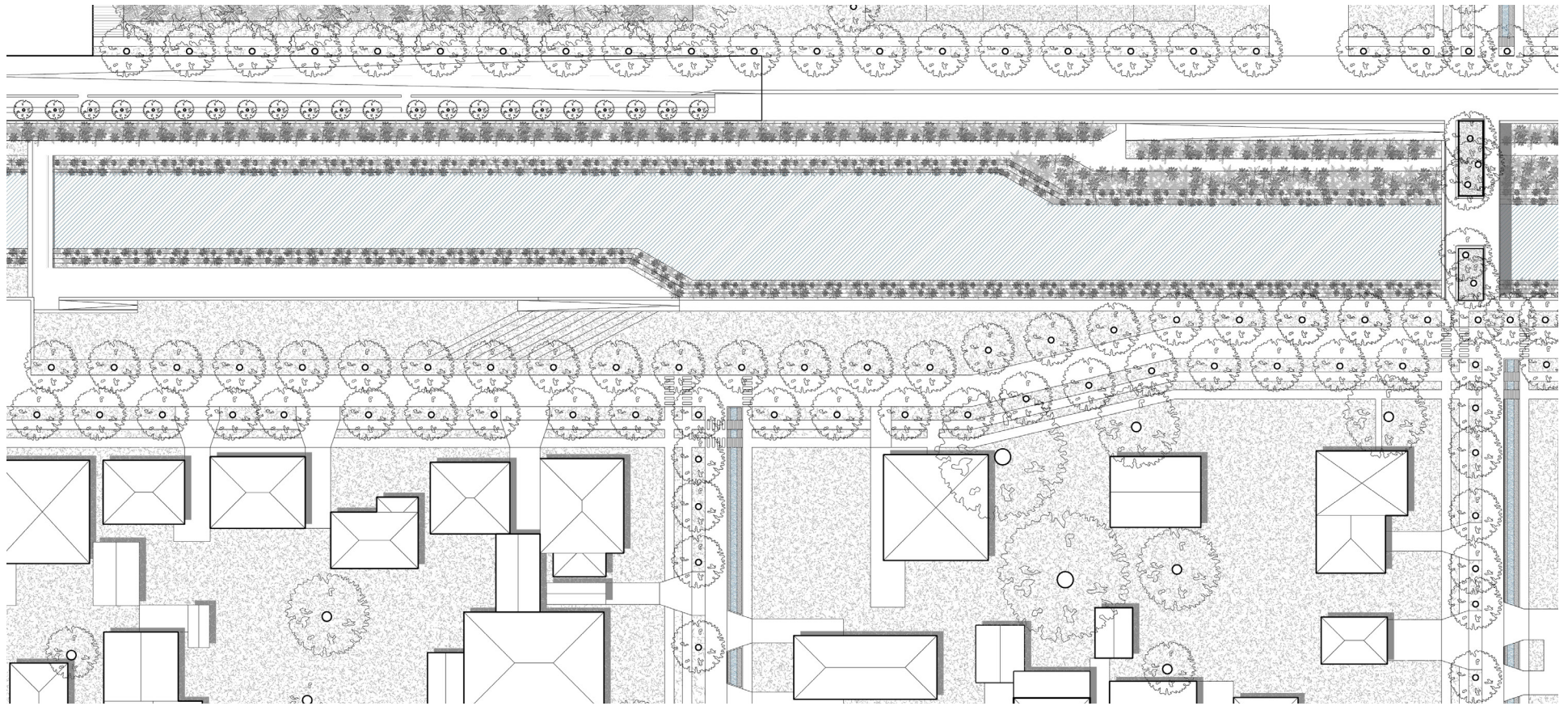
Water Storage Capacity:
583,000 ft³
~21,600 yd³
~15,500 m³



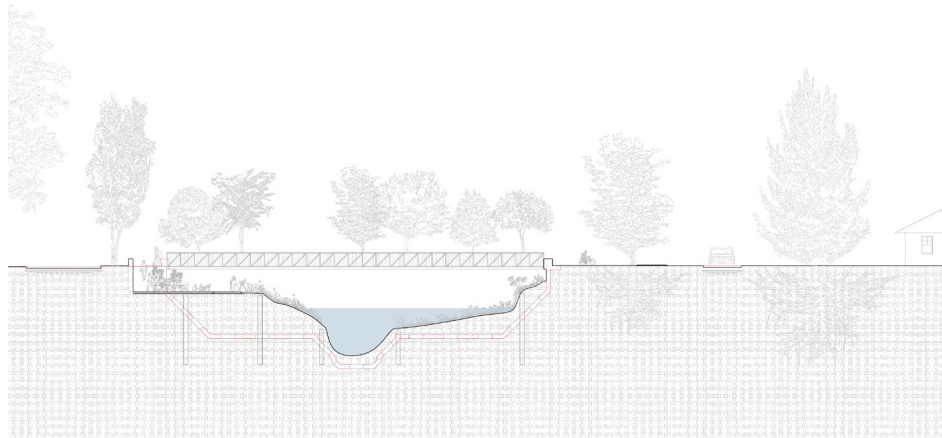
Weir Bridge Section (Transverse)



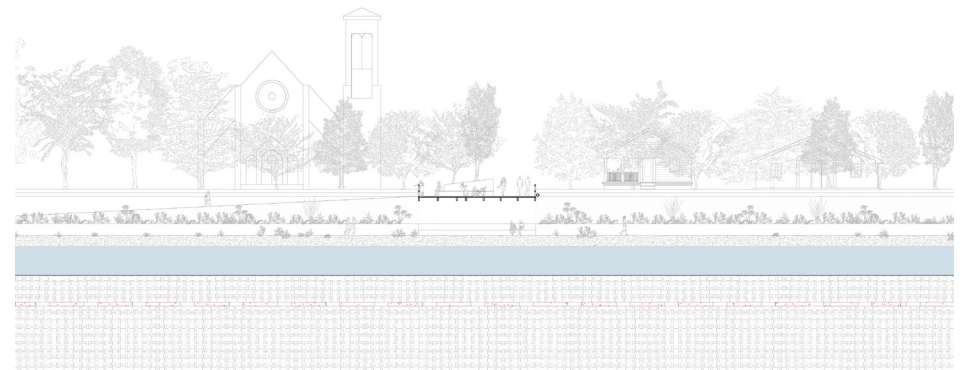
Weir Bridge Section (Longitudinal)



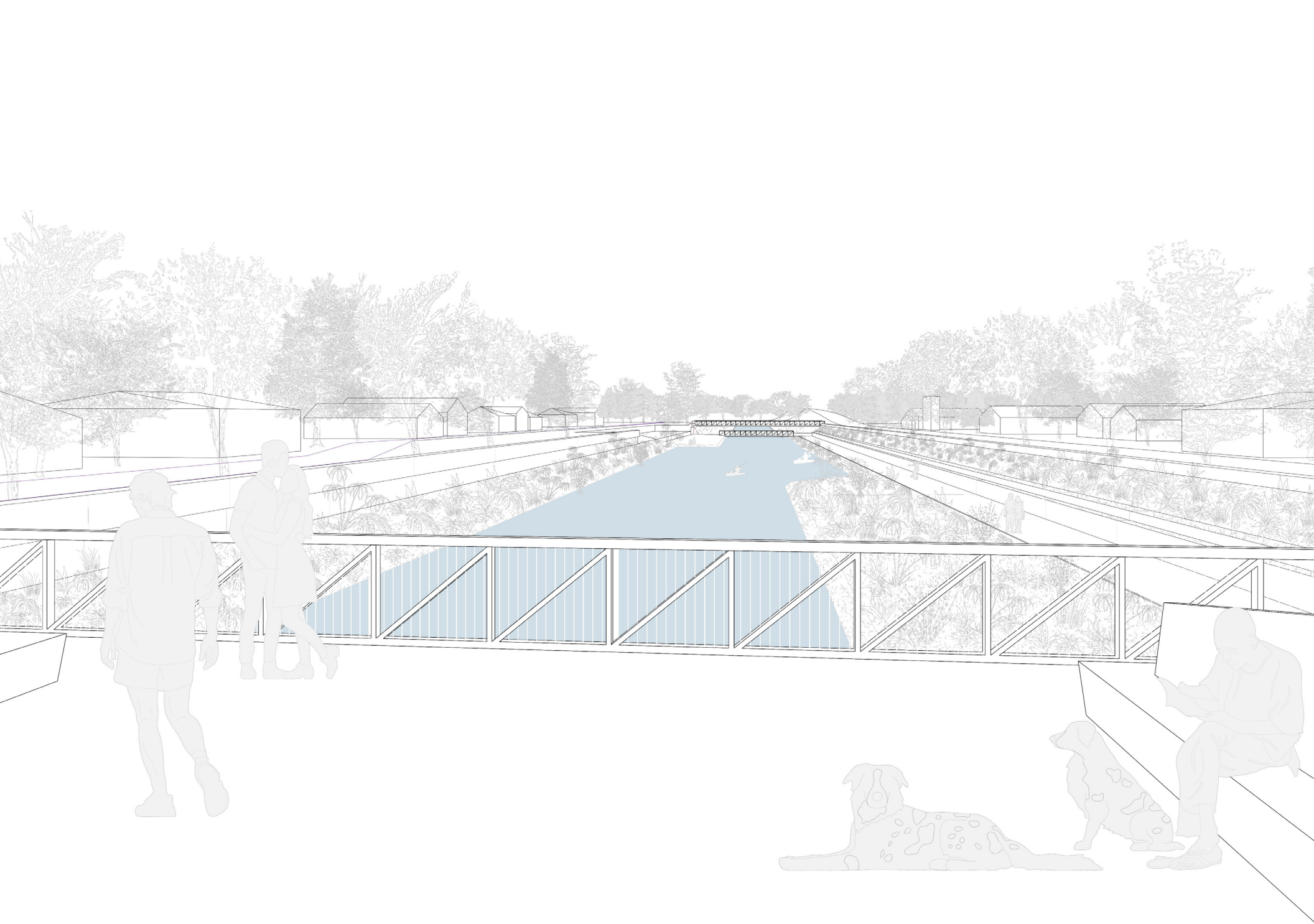
Canal-Bayou Plan



Pedestrian Entrance Transverse Section



Pedestrian Bridge Longitudinal Section



Pedestrian Bridge Perspective

CRUCIBLE COLLECTIVE: Besthoff Foundation

ARCH 6031, Fall 2024, Graduate Studio 1

Instructors: Ammar Eloueini & Mostafa Akbari

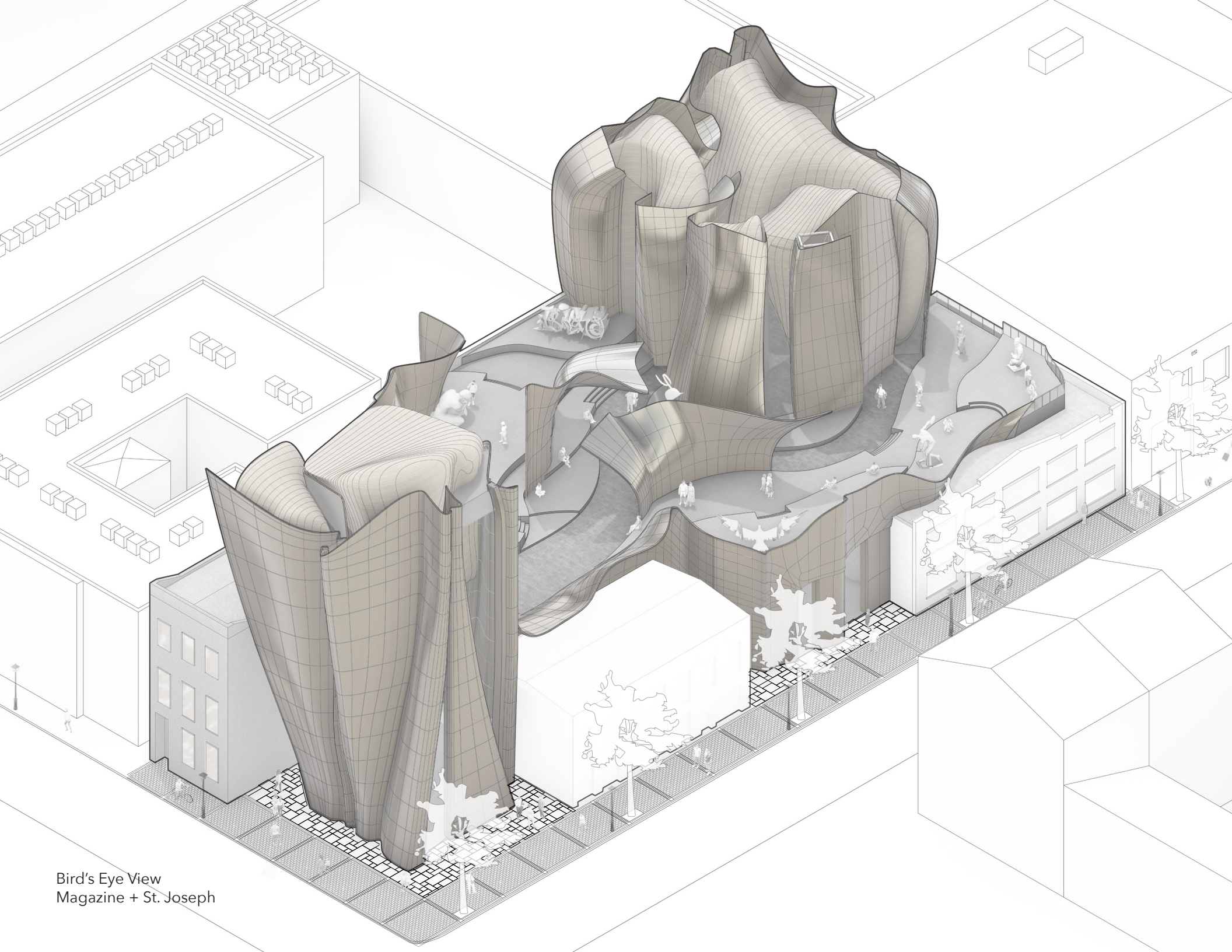
Tulane University School of Architecture, New Orleans, LA

The Besthoff Crucible Collective, situated at the intersection of Magazine St and St Joseph St in the New Orleans Warehouse Arts District, is a contemporary cultural space that integrates into its historic contexts. The foundation echoes the history of the site by adapting the historic F. H. Koretke Brass & Mfg. Co. at 922 Magazine St and the antebellum row house at 468 St Joseph St for modern use. The intervention takes the form of a sweeping brass shell which frames two towers connected by a rooftop sculpture garden. The shell's material, brass, both nods to the history of the site and evokes the history of the city through a material that is culturally significant to the city of New Orleans. The towers are then more inwardly focused and inhabited through organically shaped wooden "pockets" of programmed spaces that are connected via sky-bridges and vertical circulation elements.

Co-designer: Jorge Gonzalez Bistení, M.Arch '26

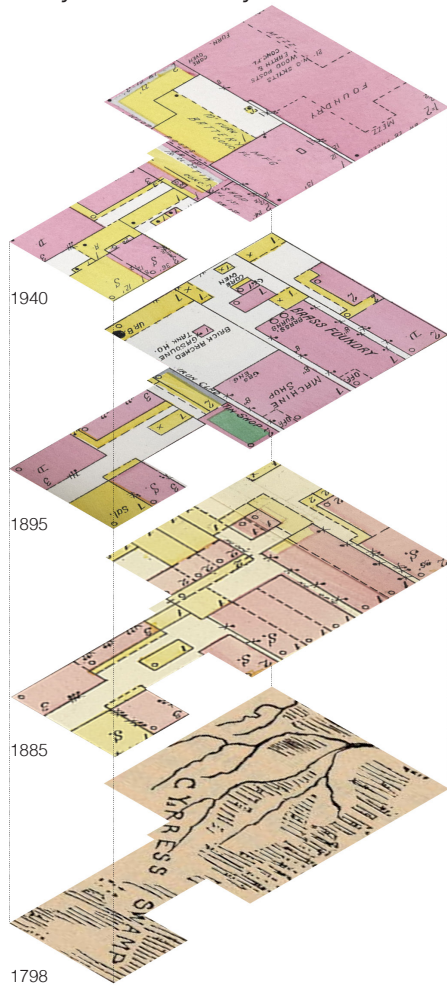


Site within New Orleans Warehouse District

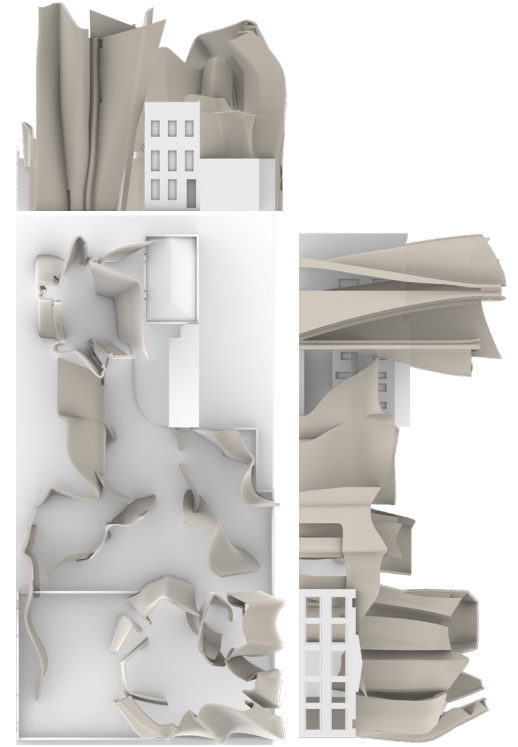
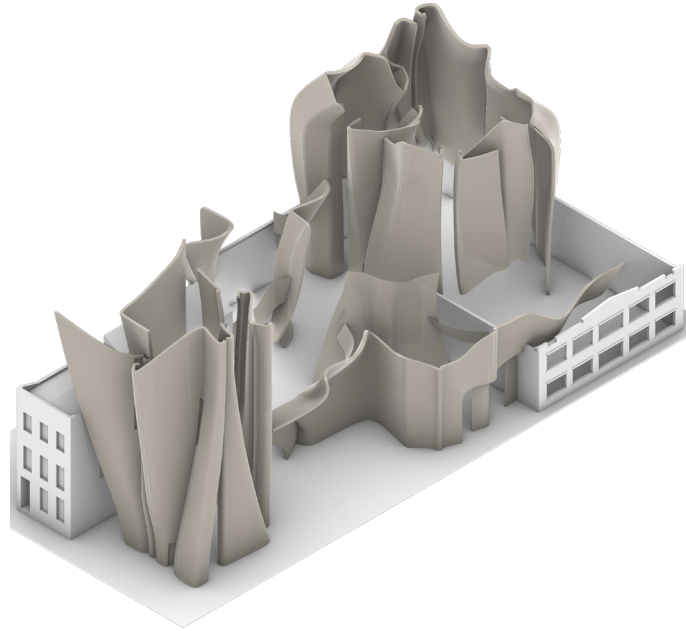


Bird's Eye View
Magazine + St. Joseph

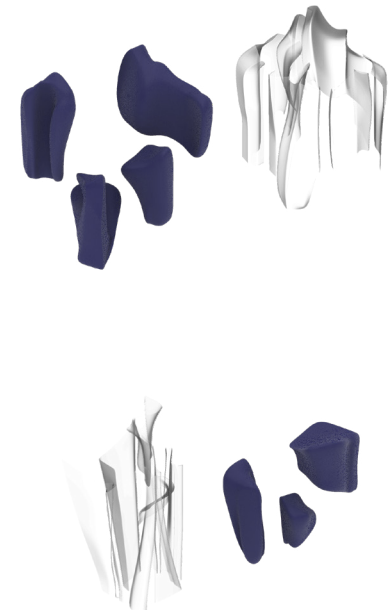
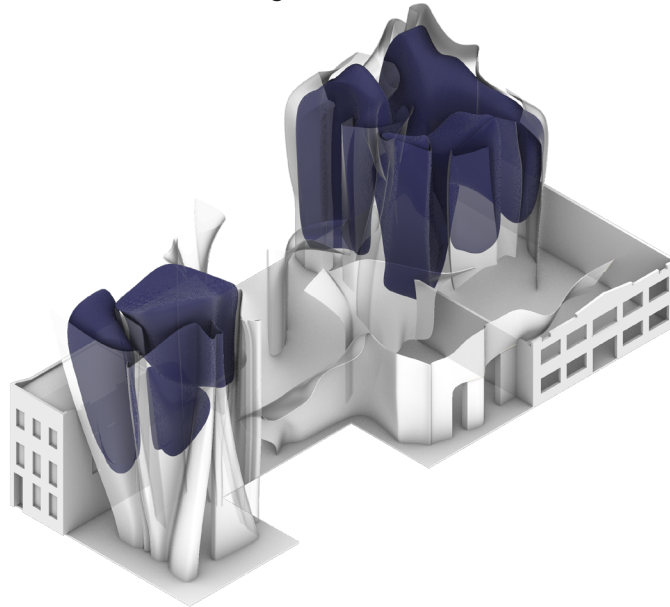
Site History/Brass Foundry



Shell Arrangement



Interior "Pocket" Arrangement



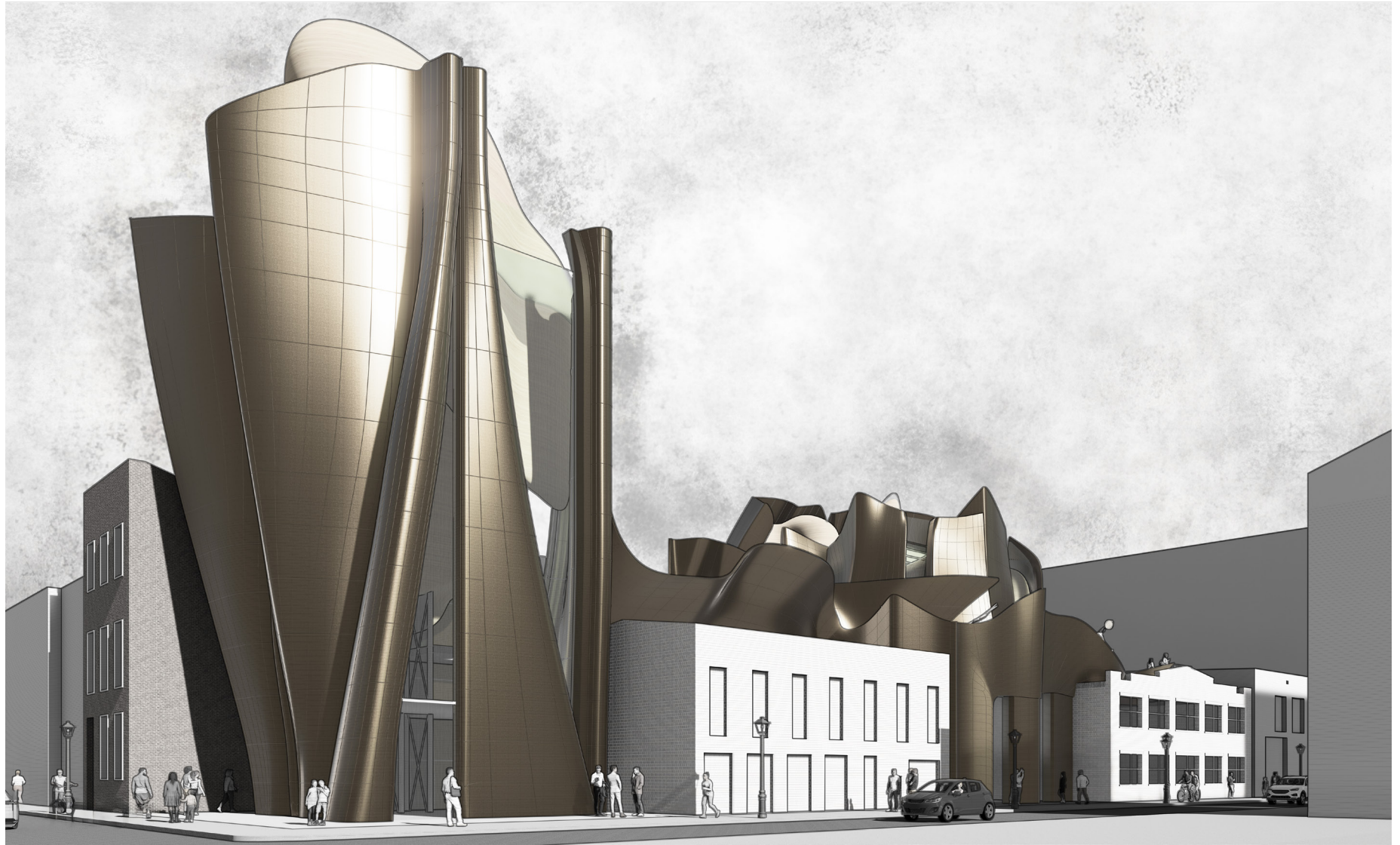
For Prospective Buyers to the Sale, Which Will Occur at **THE SPRINGS** on 7 10 11 12 13 14 15 16 17 18 19 20 21 22 23 24

CASTINGS!
From 1 oz. to 2000 Pounds.
Machinery and Electric Appliances.
Spur and Bevel Gears Cut
With Full Automatic Machinery.

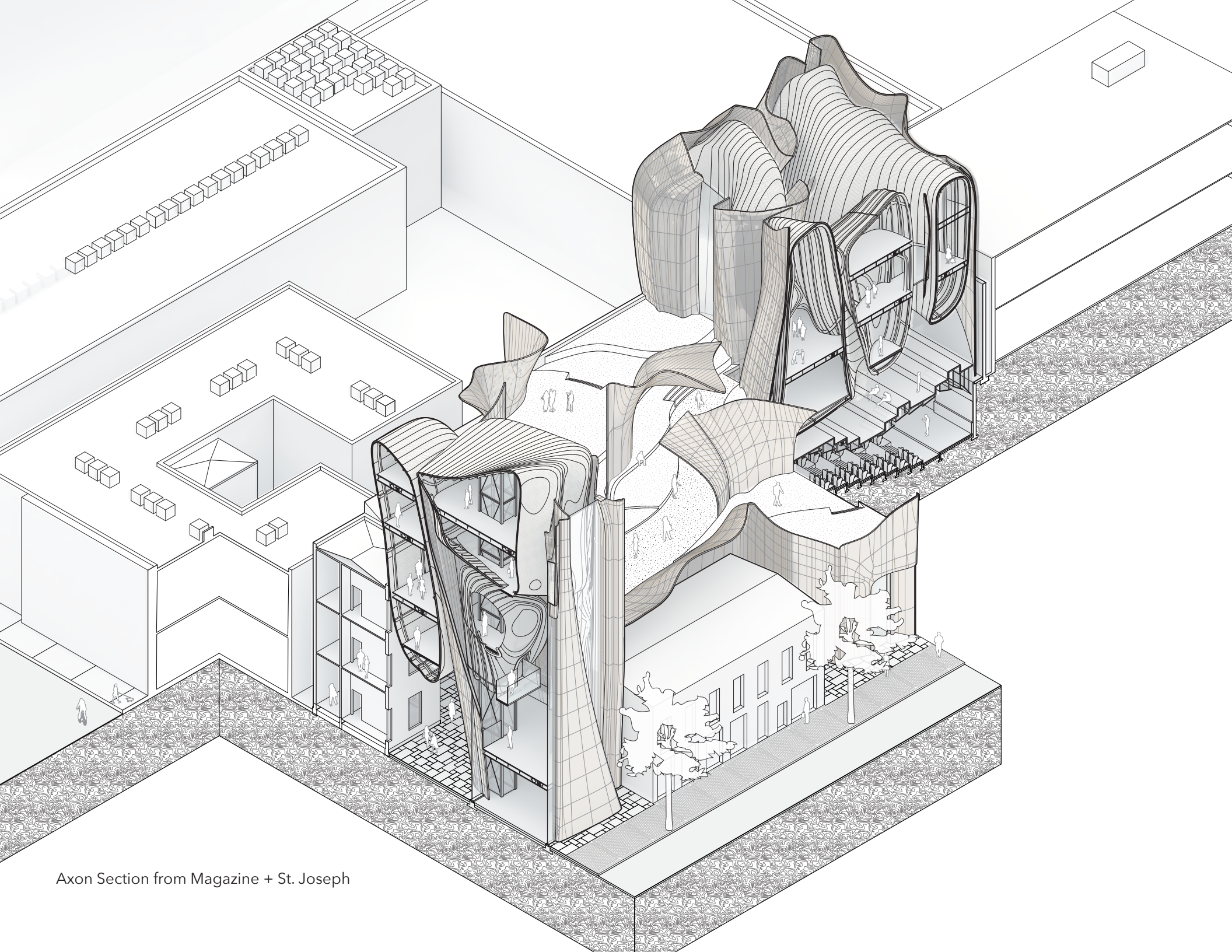
F. H. Korteke Brass & Mfg. Co.
(Limited)
922 and 924 MACAZINE STREET.
Telephone 147.

LILY WHITE
and just as spotless and immaculate as the Easter flower you will find linen laundered at the American. Its cleanliness and the satisfaction that one knows he presents an irreproachable appearance gives its wearer that

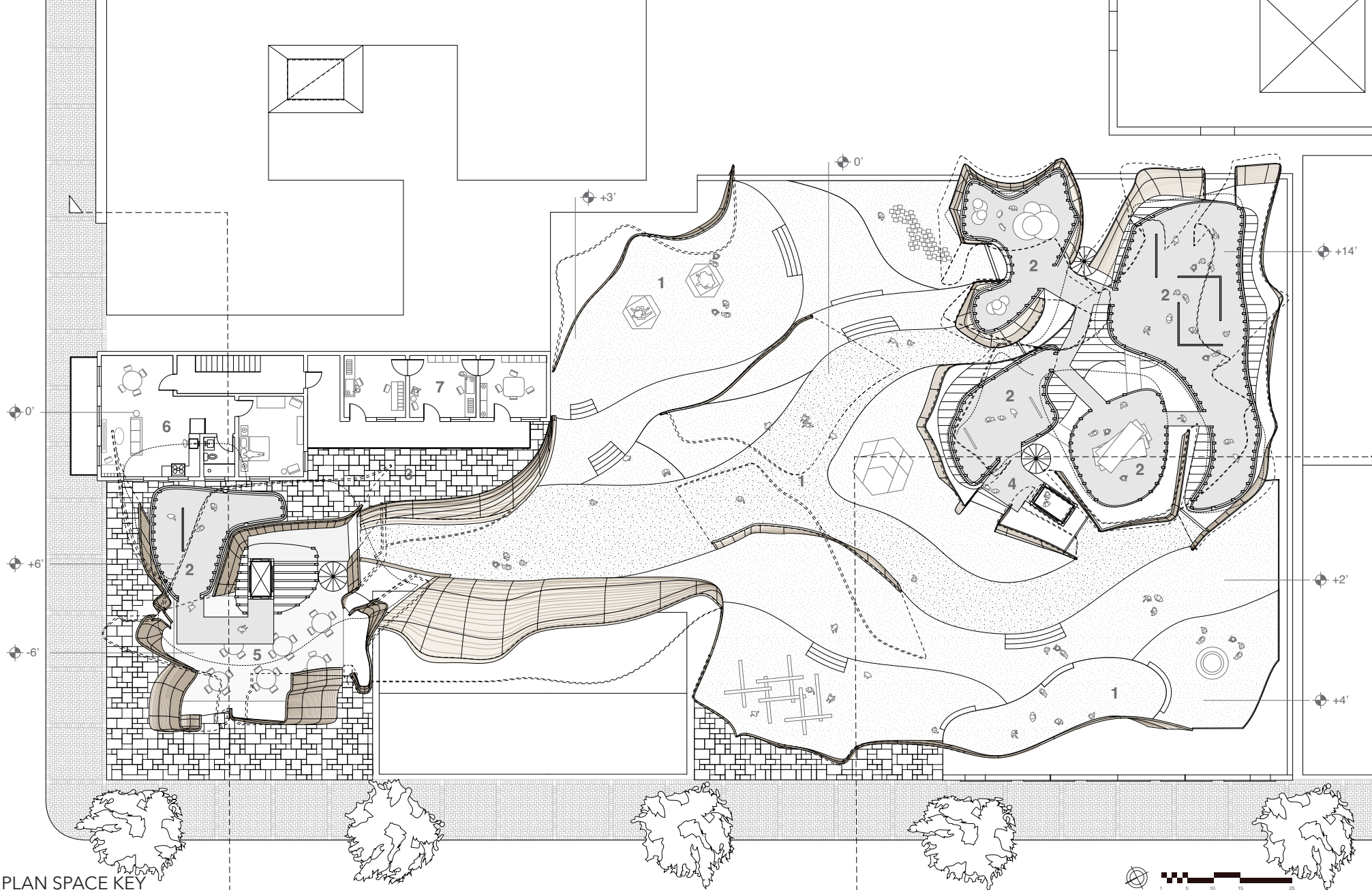
The Daily Item, New Orleans, April 13, 1901



Street View from Magazine + St. Joseph

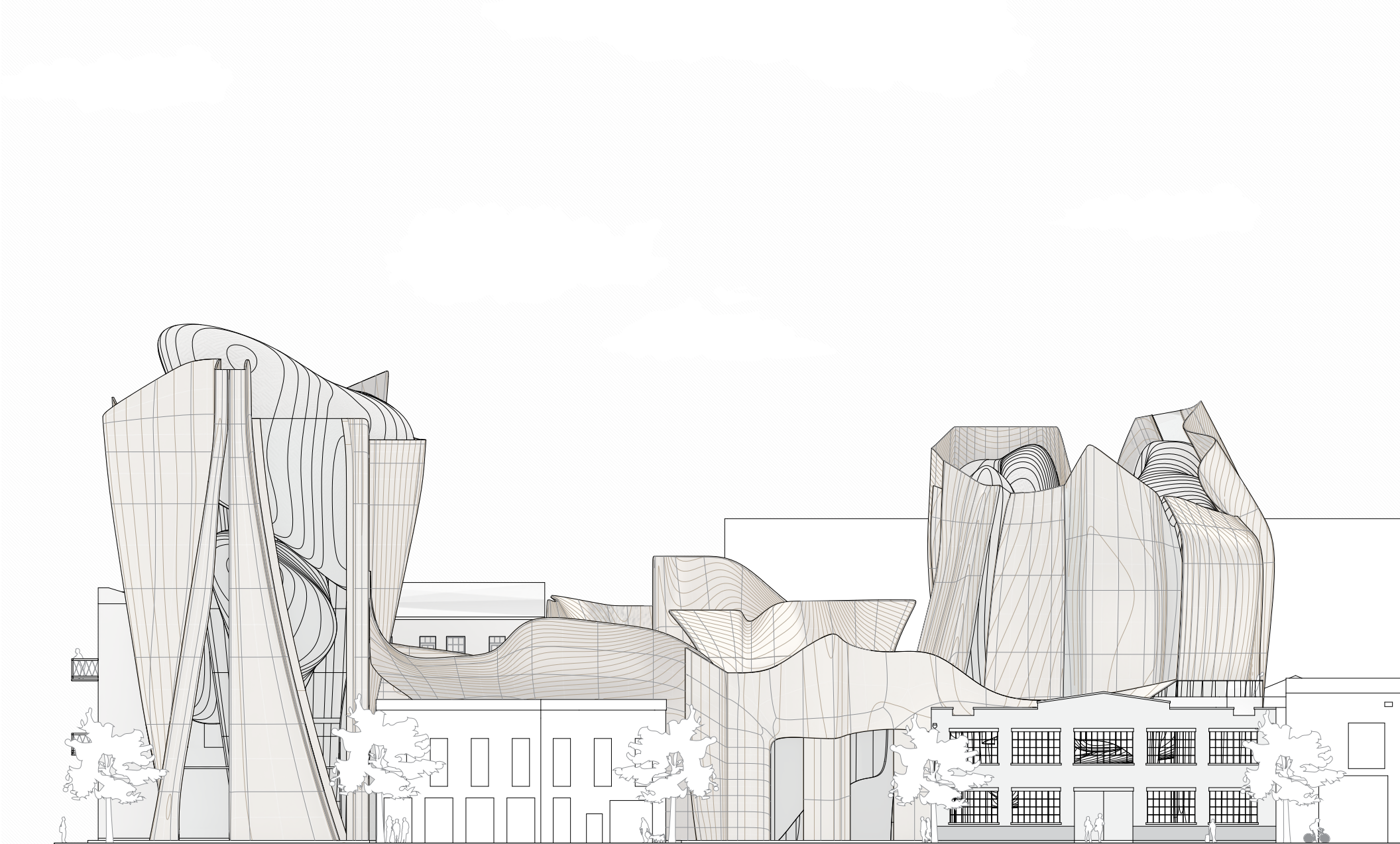


Axon Section from Magazine + St. Joseph

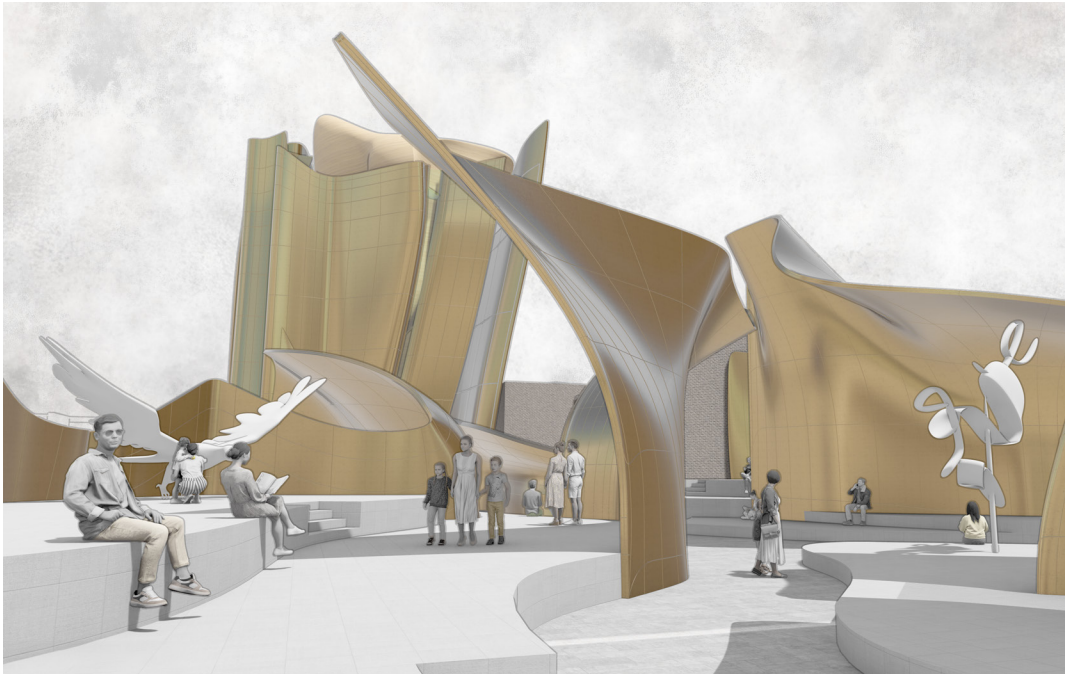


- PLAN SPACE KEY
- 1. ROOFTOP SCULPTURE GARDEN
 - 2. INTERIOR GALLERY
 - 3. TOWNHOUSE COURTYARD
 - 4. ELEVATOR LOBBY
 - 5. RESTAURANT
 - 6. ARTISTS RESIDENCE
 - 7. ARTIST STUDIOS

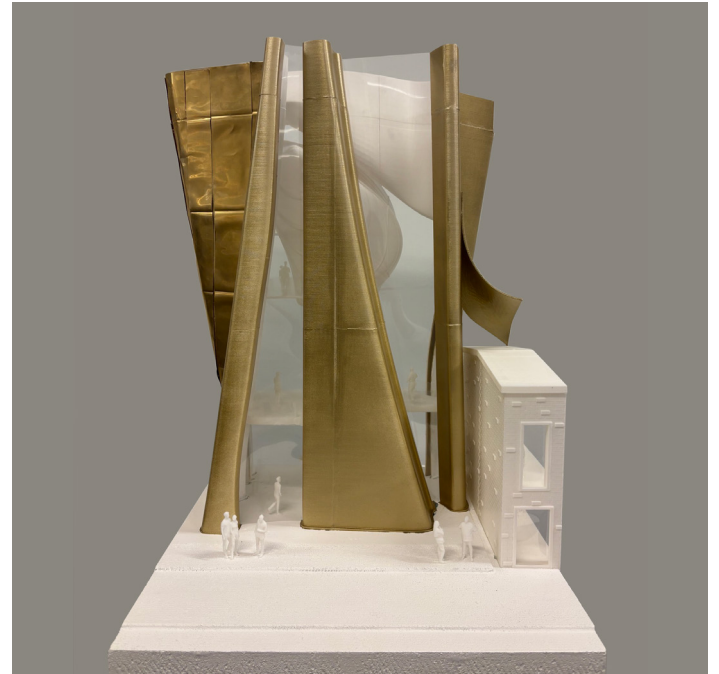




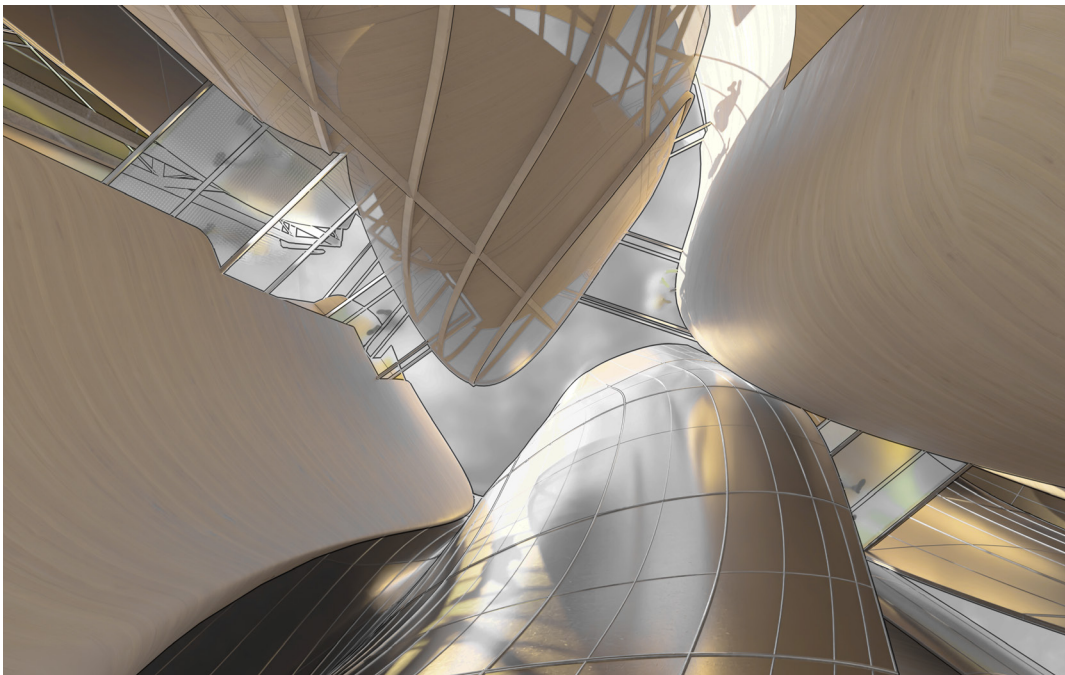
Magazine Street Elevation



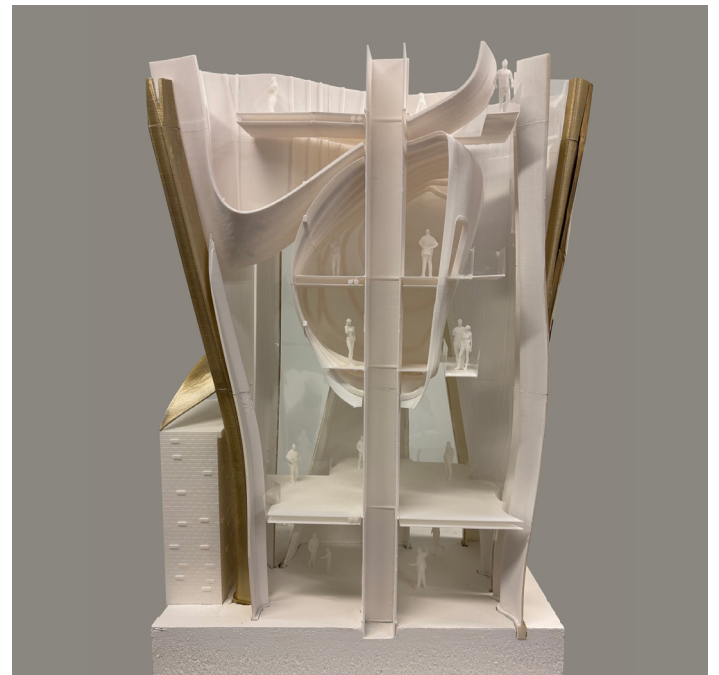
Rooftop Sculpture Garden View



Section Model Exterior



Tower Interior Sky View



Section Model Interior

URBAN WOODLAND - Sustainable Housing for the City in the Forest

ARCH 4017, Spring 2024, Senior Capstone Studio
Instructors: Charles Rudolph, Rick Porter, & Ennis Parker
Georgia Institute of Technology, Atlanta, GA

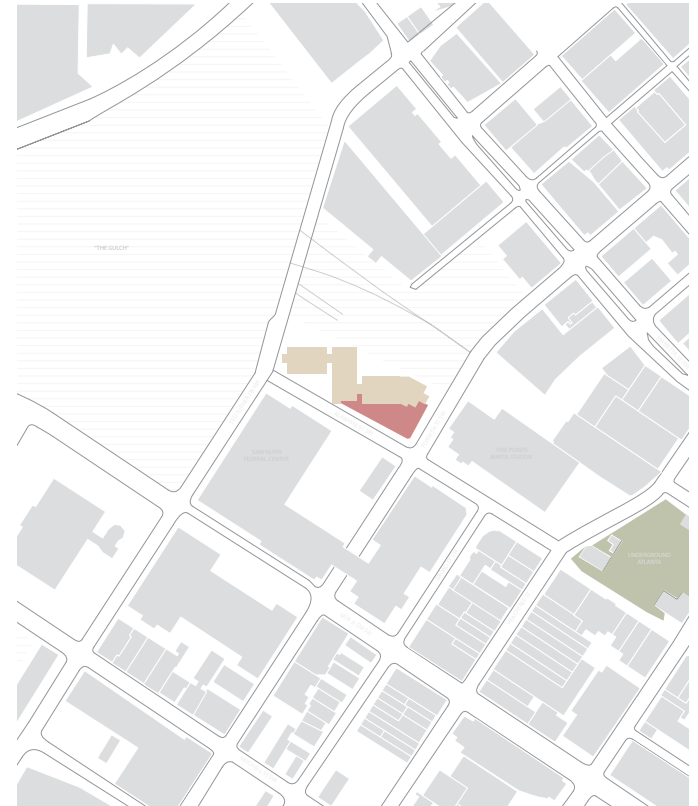
In response to the 2024 ACSA “Timber in the City” competition, the capstone studio proposes a mass timber housing intervention atop an existing historic structure in Atlanta’s urban fabric: the 1947 Atlanta Constitution Building, which sits abandoned in the heart of South Downtown.

Additionally, the studio seeks to address the city’s ongoing housing crisis. In an era where being housing-burdened has become the norm, Urban Woodland seeks to set itself apart from the long line of failed “affordable housing” projects in US history by re-evaluating its goal. Existing solutions focus solely on rent affordability and ignore the reasons rent became unaffordable to begin with. By shifting the thinking from “affordable housing” to “sustainable housing,” Urban Woodland develops a multi-faceted solution to one of America’s most pressing problems.

Sustainable Housing encompasses not only environmental sustainability but also economic and social sustainability. Urban Woodland is a mixed-use development that repurposes a valuable social artifact—the Atlanta Constitution Building—into a public hub. This hub includes restaurants, retail spaces, a grocery store, self storage, and an urban data center. These spaces generate revenue that subsidizes 70% of the housing units. This keeps 70% of units affordable without the need of perpetual government-sourced subsidies. The remaining 30% is the market rate in order to foster a mixed-income community.

By addressing environmental, economic, and social sustainability, Urban Woodland reimagines what is possible in Atlanta’s South Downtown and beyond. Taking a truly well-rounded approach to housing and living will empower communities to move forward into a more eco-friendly, more prosperous, and more equitable future.

Co-designer: Ana Christina Palma Tello Arch '24



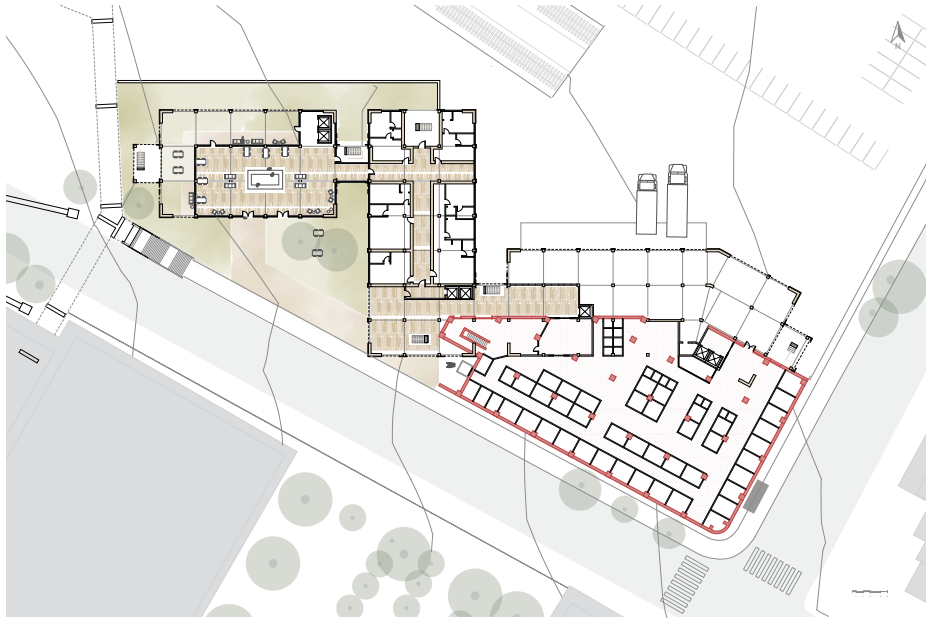
Context Plan of South Downtown Atlanta



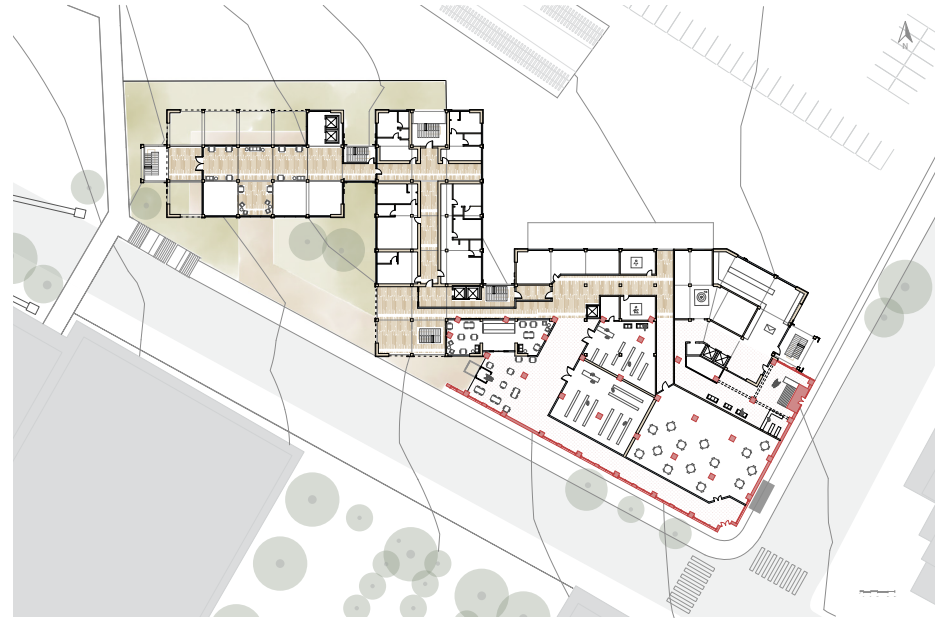
Street View from Corner of Alabama & Forsyth -- 6:30am



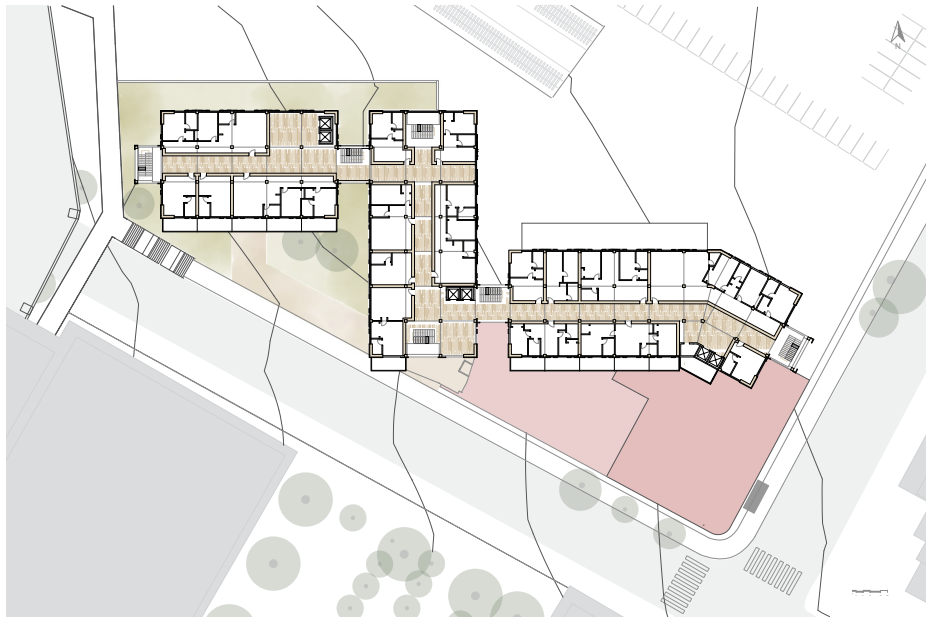
Interior Apartment Bedroom - 5:30pm



Ground Level (Zero) Floor Plan



Street Level (One) Floor Plan

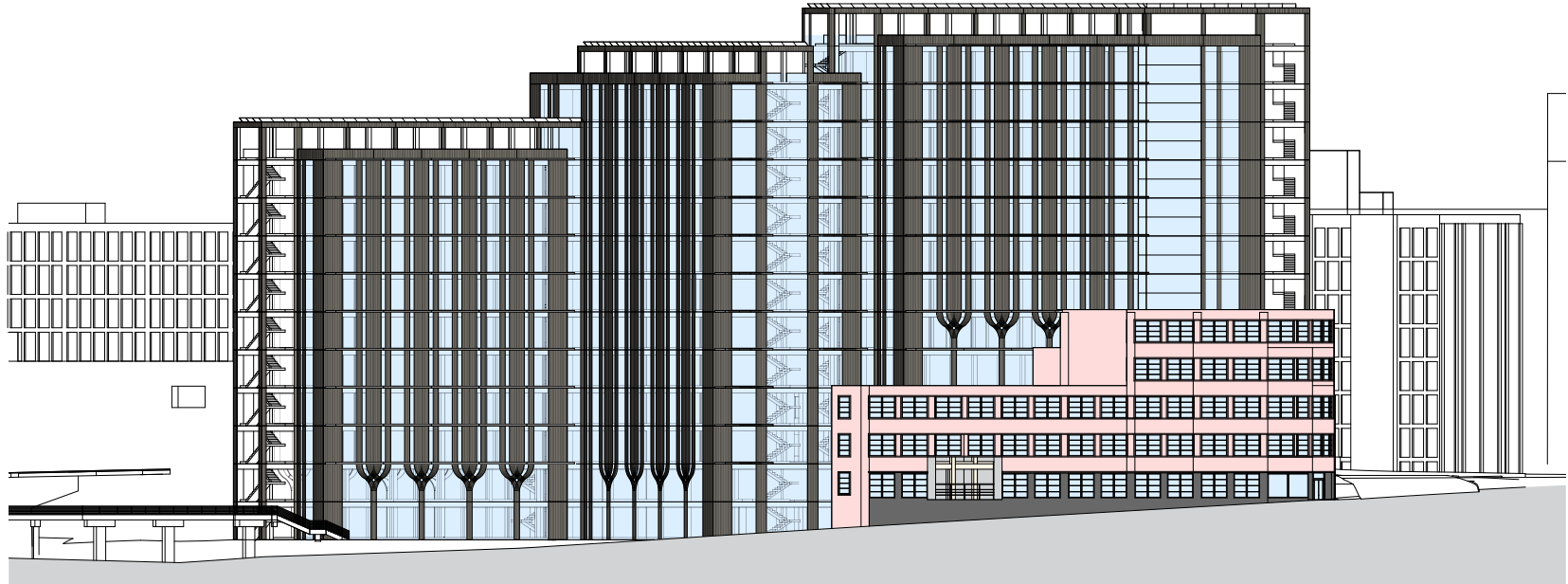


Typical Housing Floor Plan

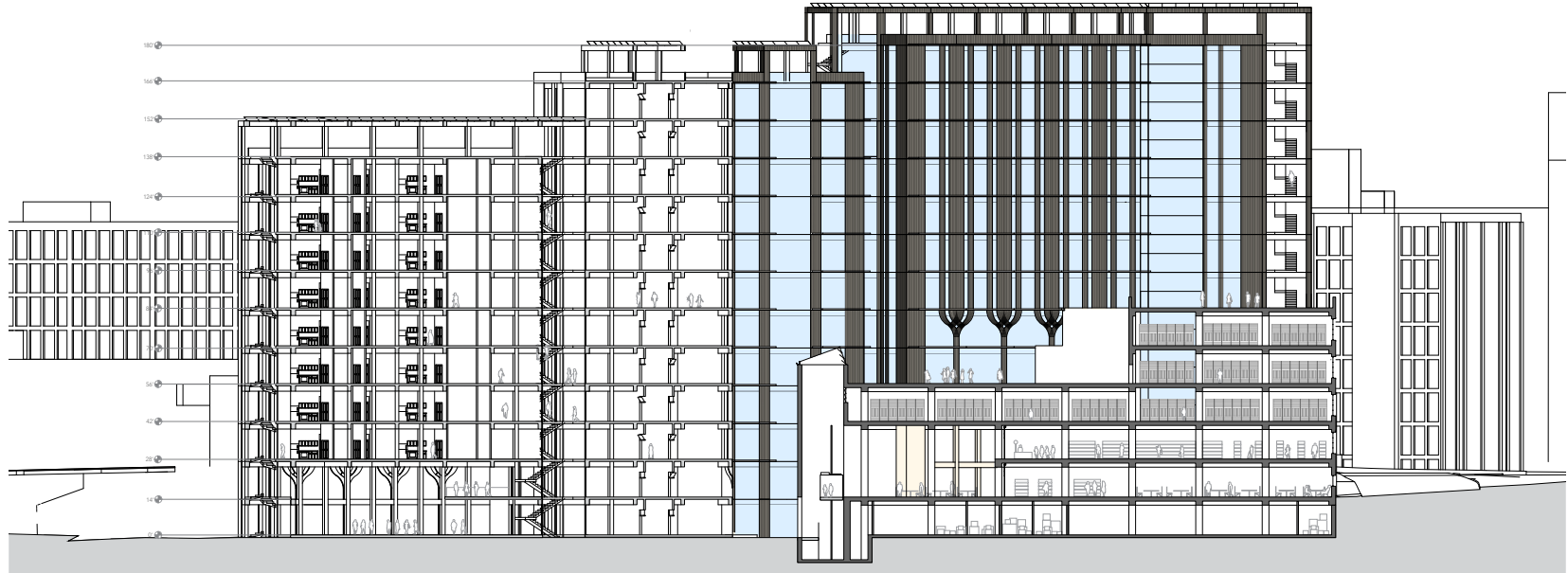


Typical Housing Units Layout

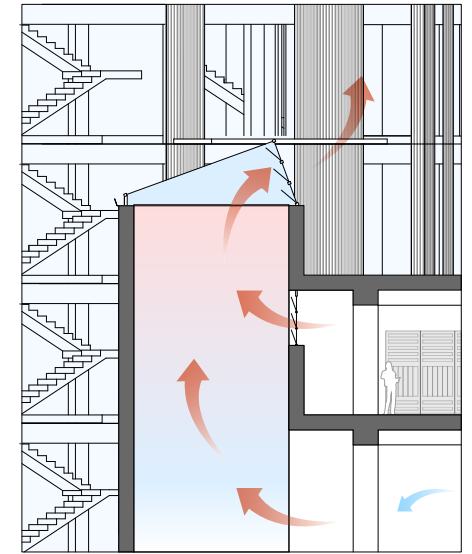
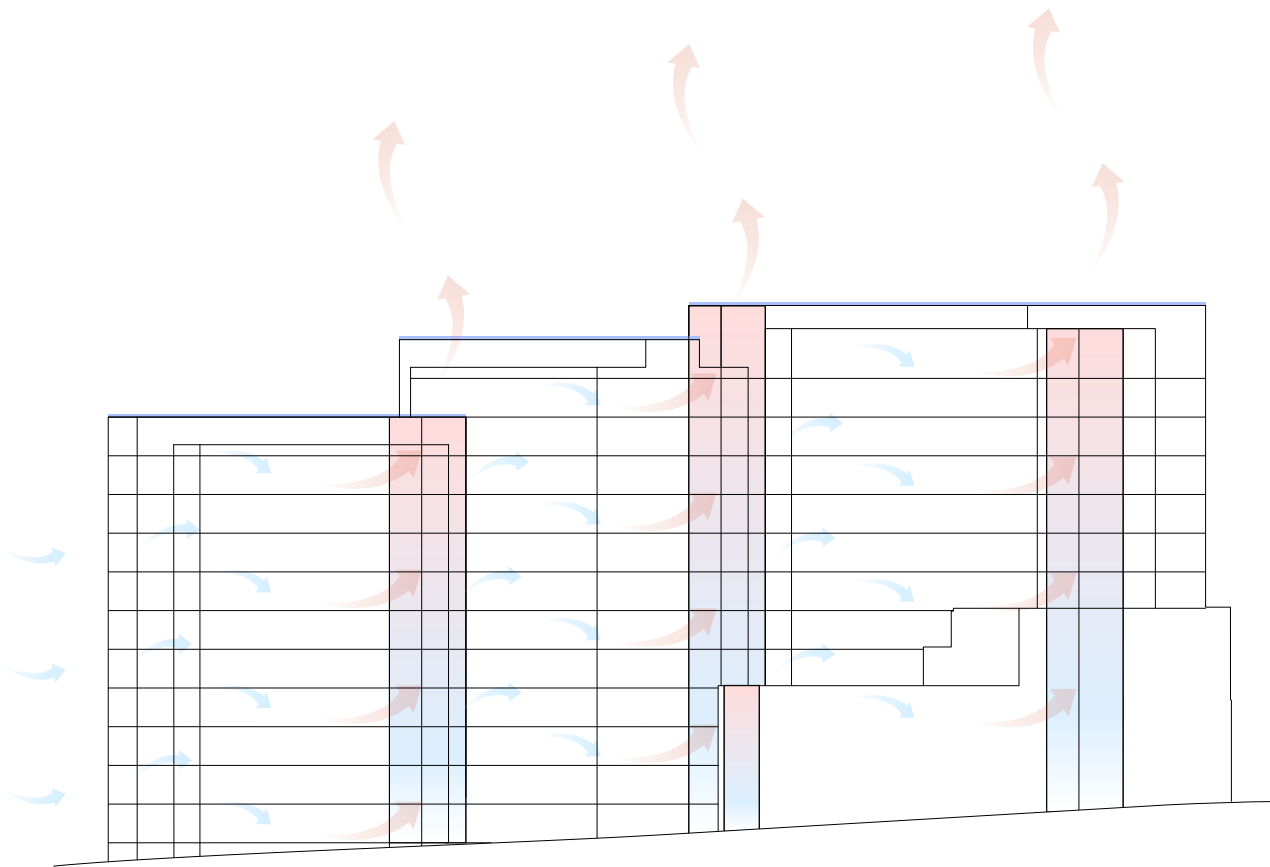
- APARTMENTS
- STUDIO
- 1 BEDROOM
- 2 BEDROOM
- 3 BEDROOM



Alabama Street Elevation



Alabama Street Section

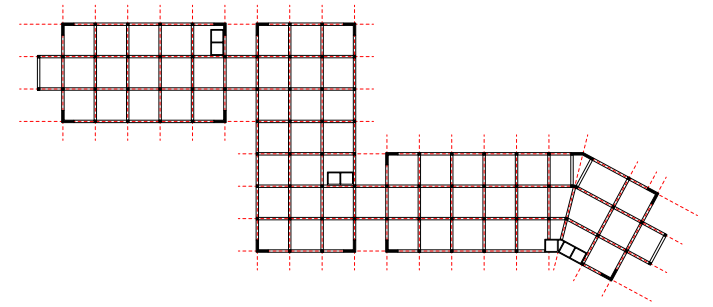


Data Center Ventilation Detail

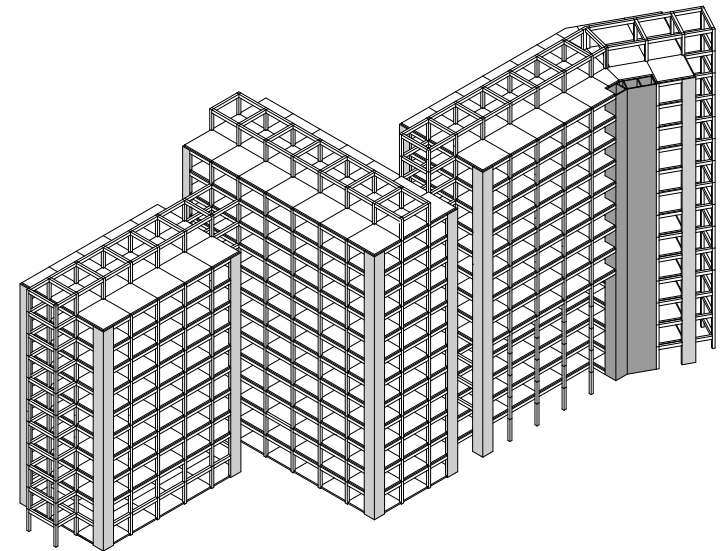
Solar Chimney Ventilation Diagram



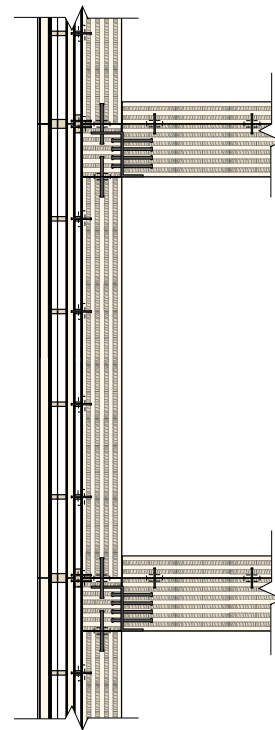
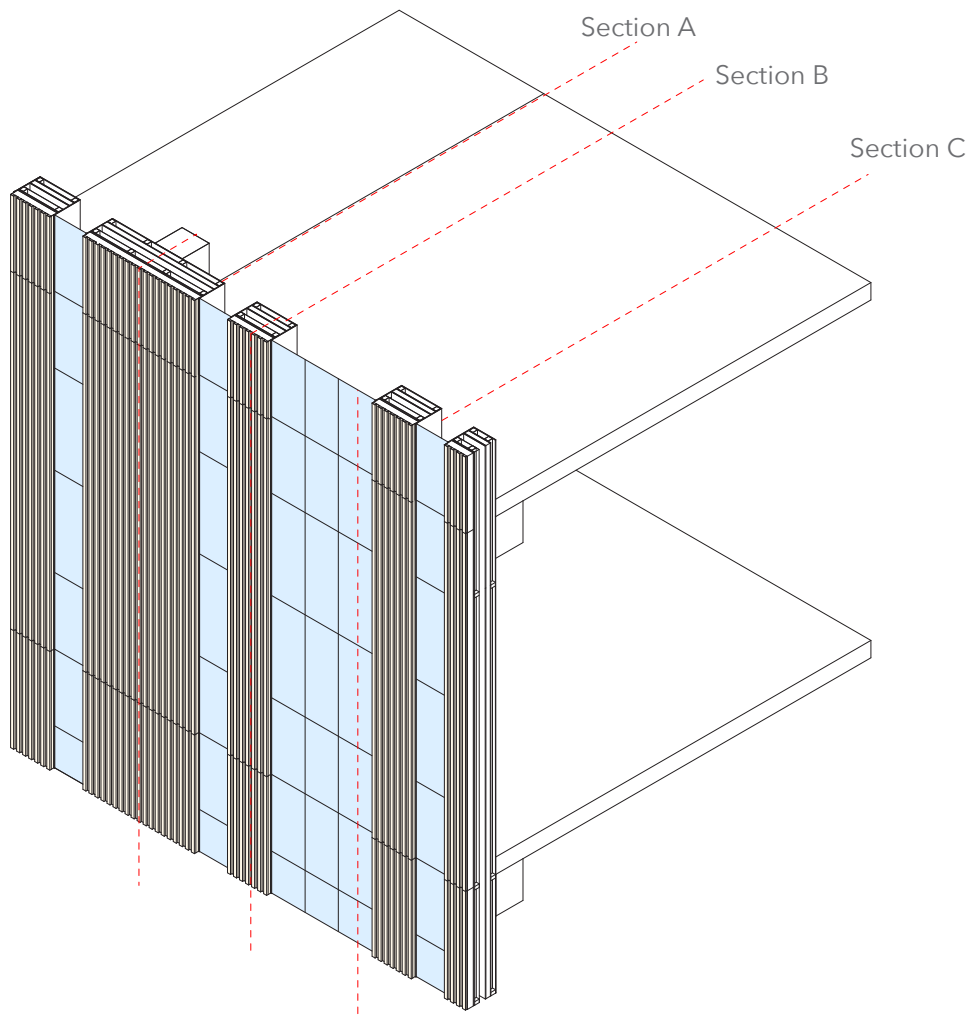
Street View from Ted Turner Drive - 5:30pm



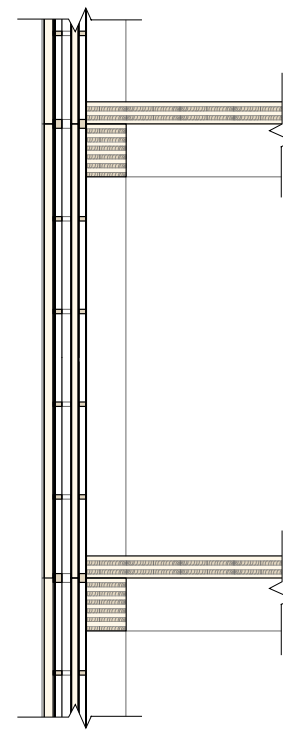
Structural Framing Plan



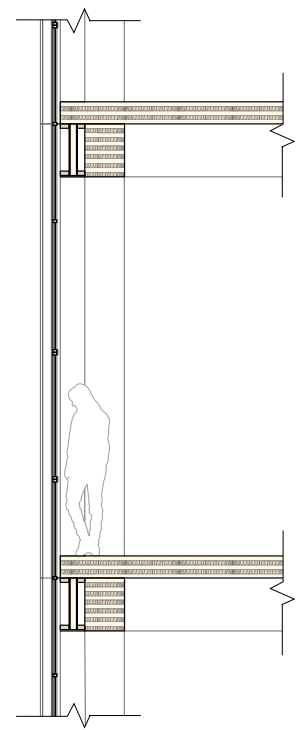
Mass-timber Structure Axon



Section A



Section B



Section C

Wall Section Axon

“Intermission”

Flourishing Communities Competition Phase 2 - English Avenue, Atlanta, GA

ARCH 3016, FALL 2022, Junior Studio, Instructor: Julie Kim

Georgia Institute of Technology, Atlanta, GA

Intermission was the culmination of the Second Phase of the English Avenue competition within Julie Kim’s “Maximum/Minimum: the Power of Placemaking” junior studio. This studio was in association with the Flourishing Communities Collaborative (FC2), a multi-disciplinary academic lab committed to community engagement and social outreach. This project was a community partnership with Rev. Winston Taylor to propose a shipping-container-based solution for a vacant property in the English Avenue Neighborhood of Atlanta that will serve as a business incubator for local food vendors and a community resource/public space. The property is adjacent to the historic landmark ruin of St. Mark’s AME Church, which serves periodically as a concert venue for small performances; all proposals were intended to double as a supporting property for St. Mark’s when necessary.

Intermission emerges as the new heart of English Avenue, offering the community a place to relax, socialize, and reflect. Nestled along the historic St. Mark’s AME, this space brings an added attraction in supporting the already remarkable venue. Intermission acts as an in-between for not only the church’s events, but the communities’ lives, a place to gather and uplift each other while also supporting locally owned businesses.

Co-designers:

Spencer McMains, B.S. Arch ‘23

Reigna Iheme, B.S. Arch ‘23

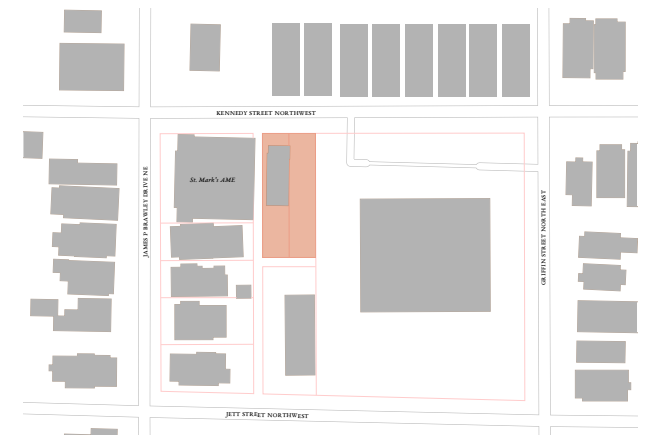
Ella Petry, B.S. Arch ‘24

Consulting Architecture Firm:

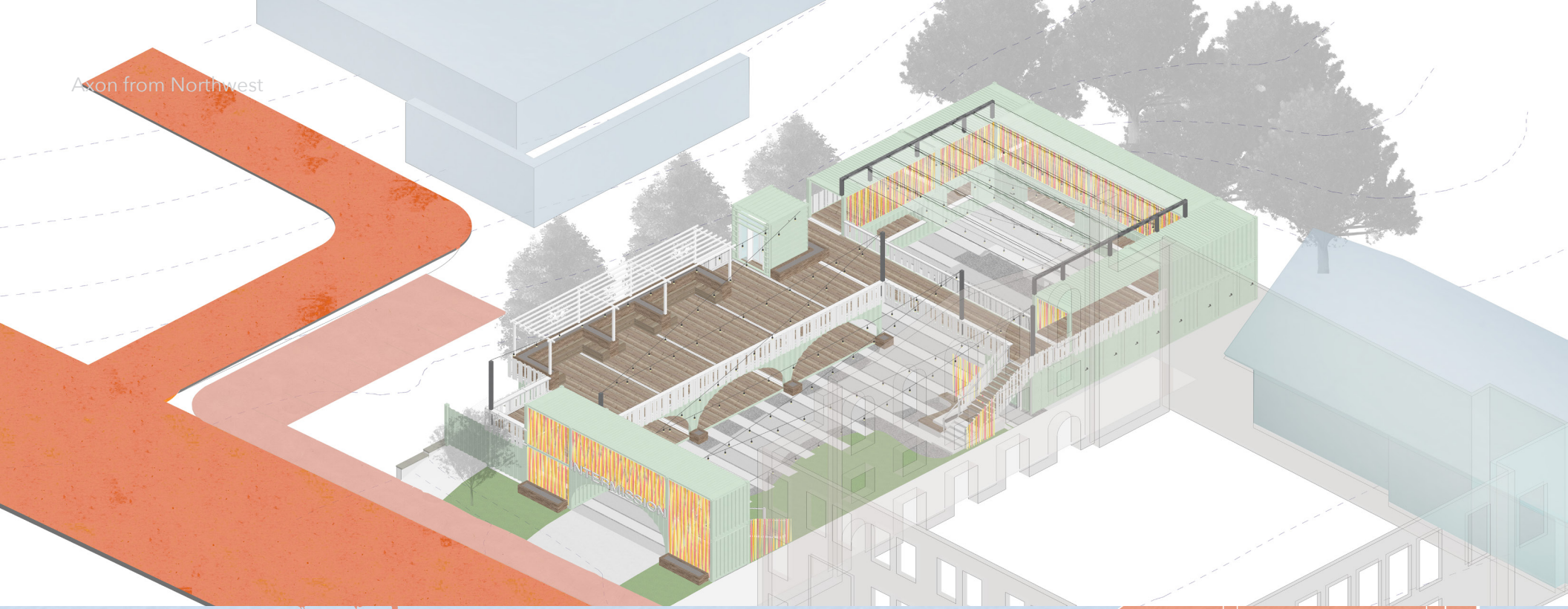
Square Feet Studios, Atlanta, GA



English Avenue & Project Site



Axon from Northwest

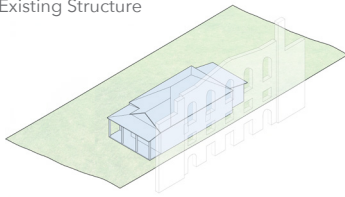


North Elevation

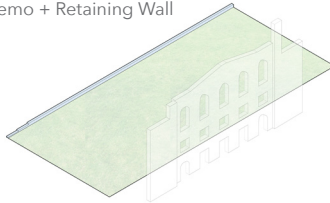


Site Development

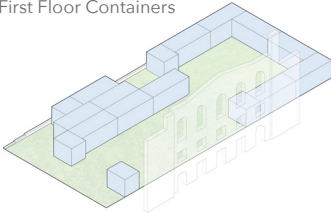
Existing Structure



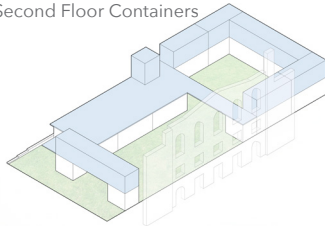
Demo + Retaining Wall



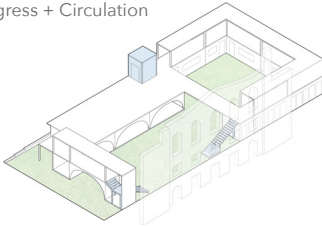
First Floor Containers



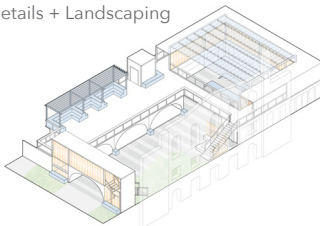
Second Floor Containers



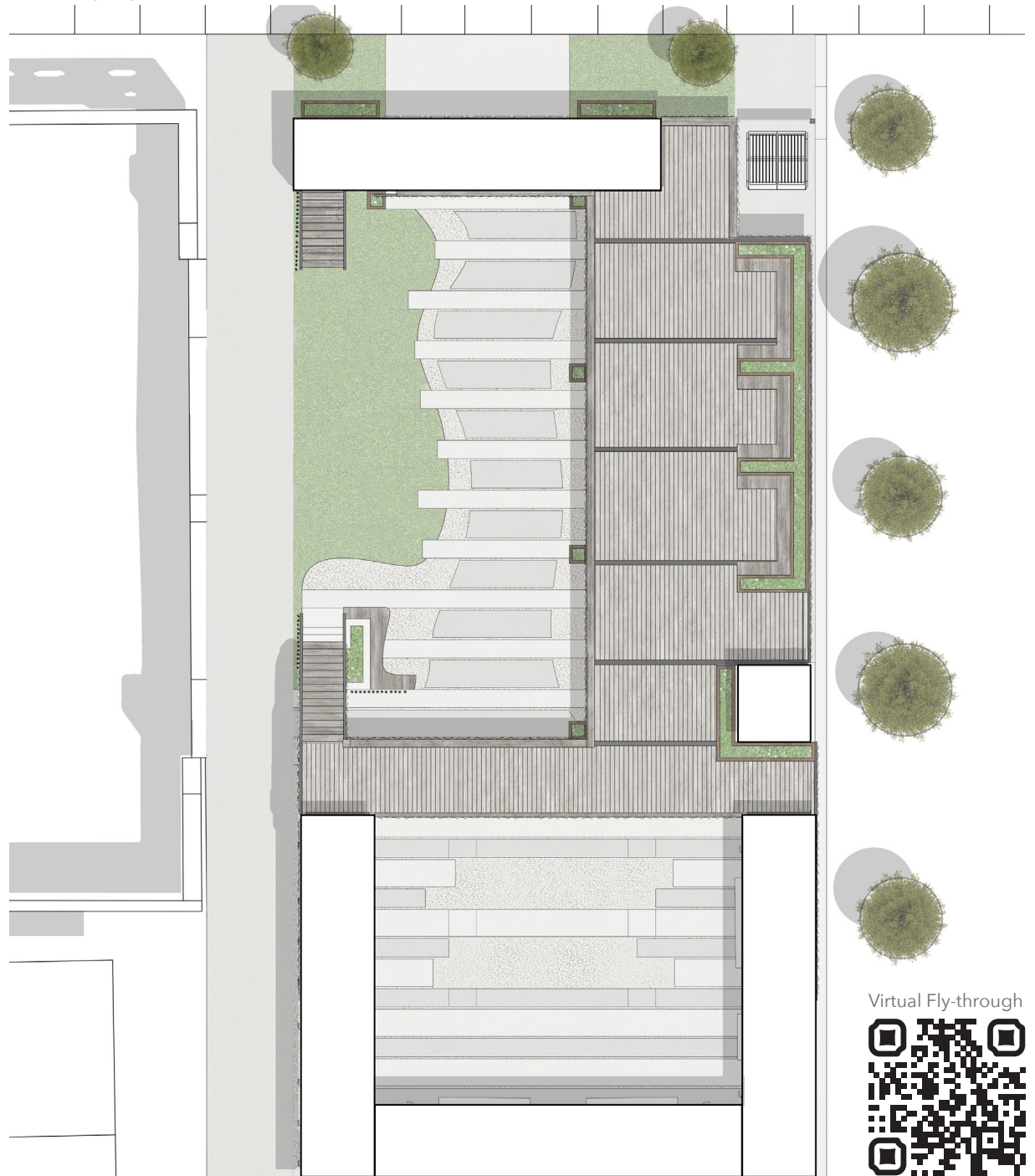
Egress + Circulation



Details + Landscaping



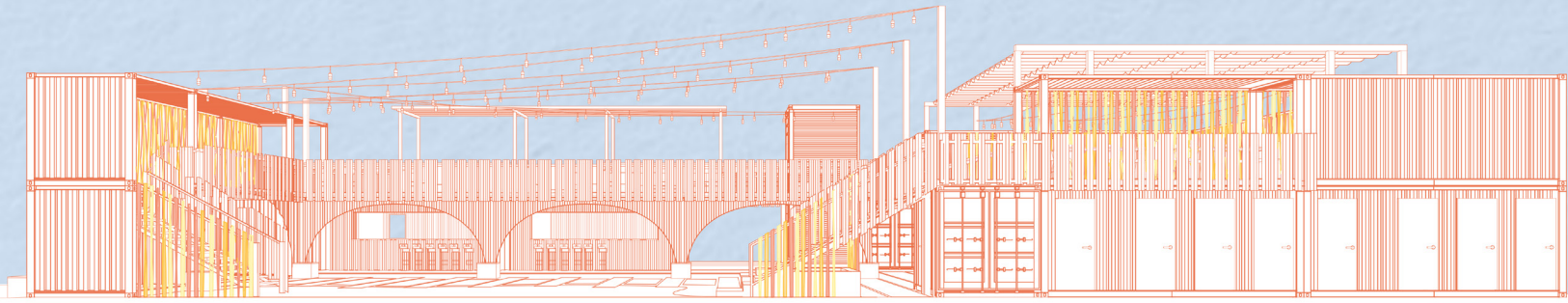
Landscaping Plan



Virtual Fly-through



East Elevation

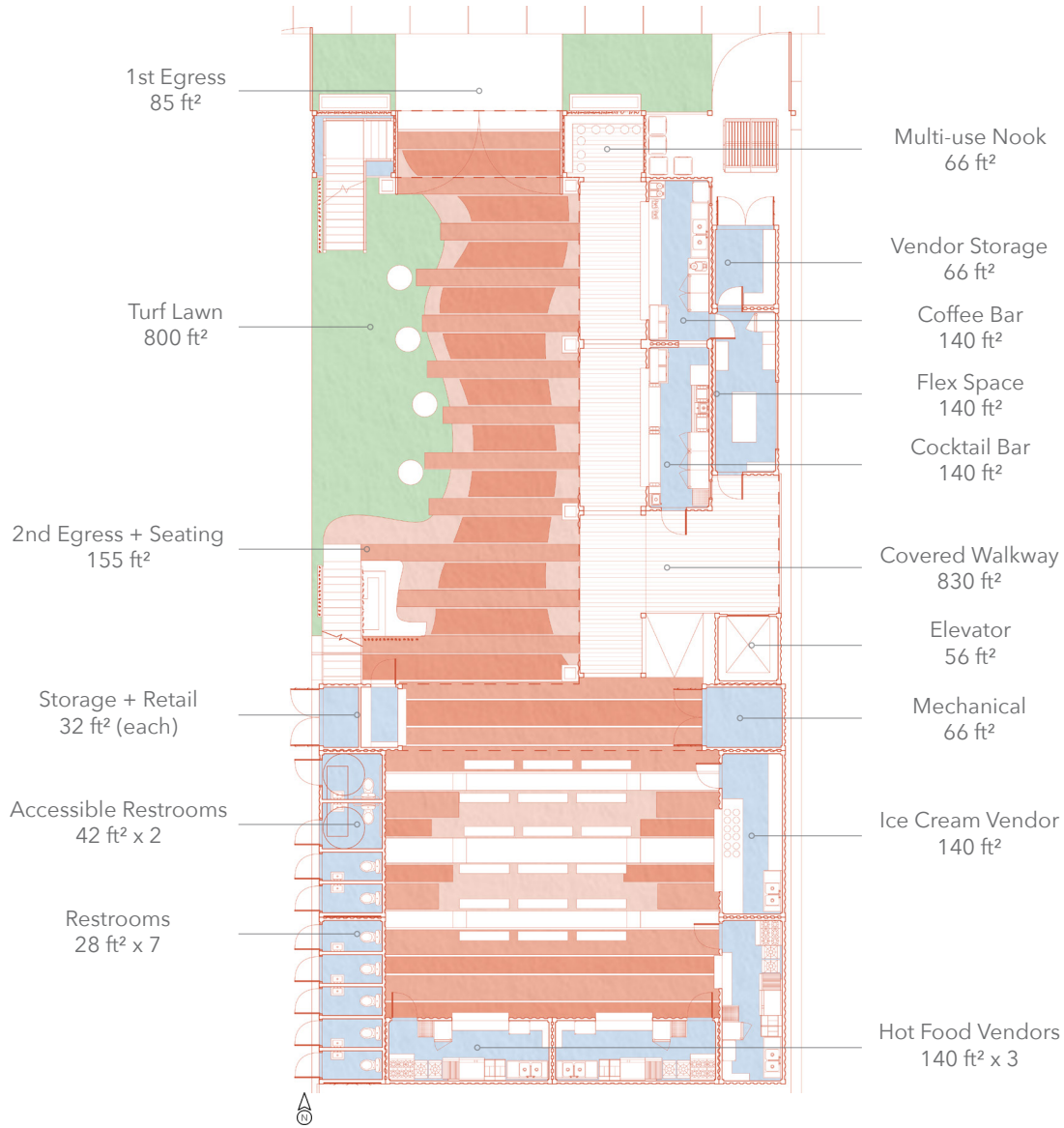


Eastern Section Perspective

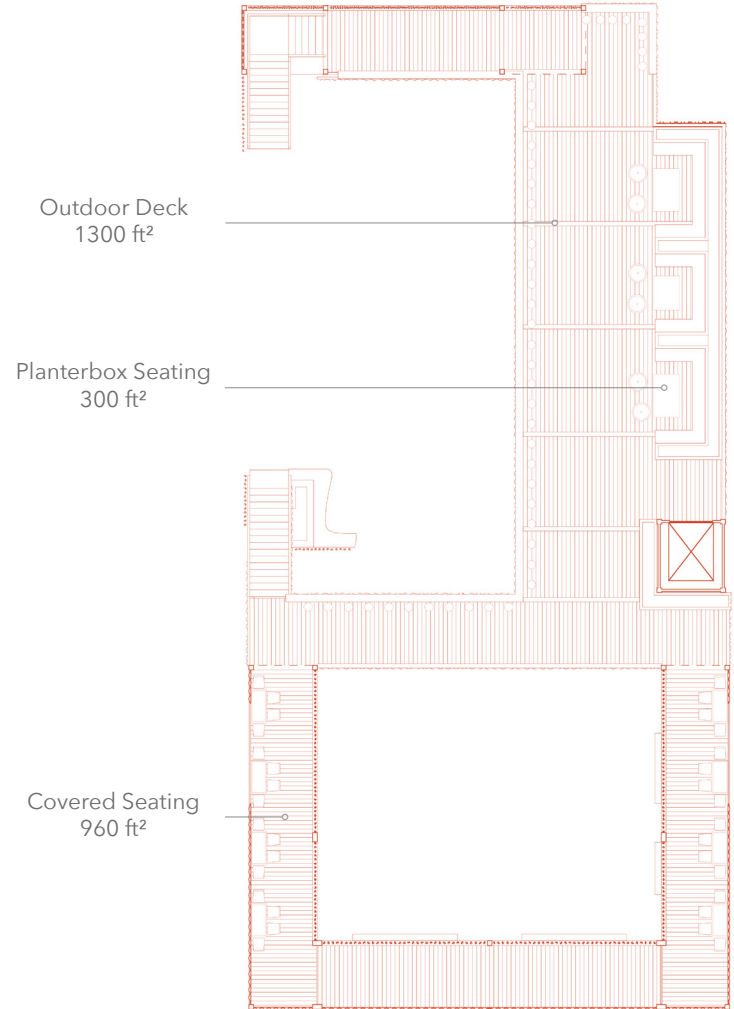


Annotated Plan

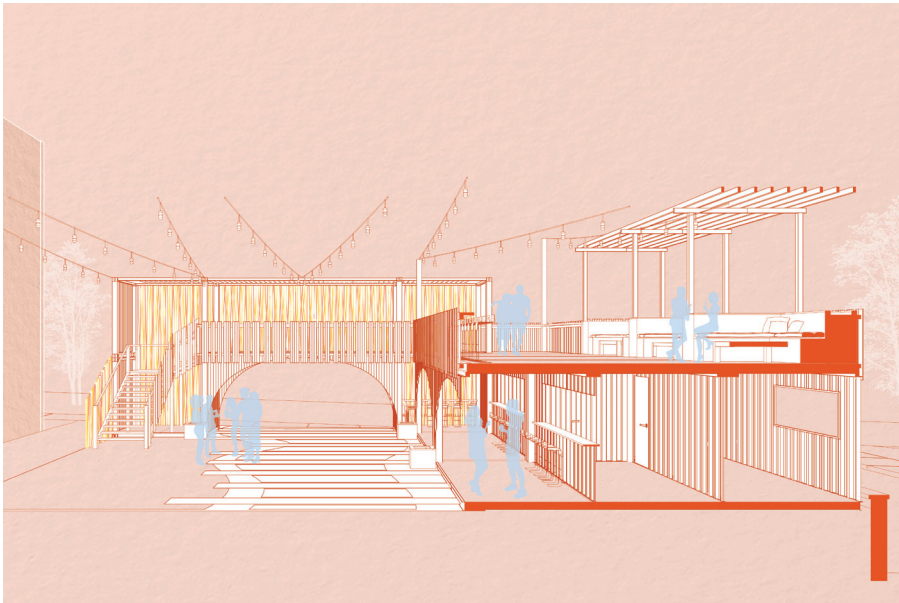
Ground Level



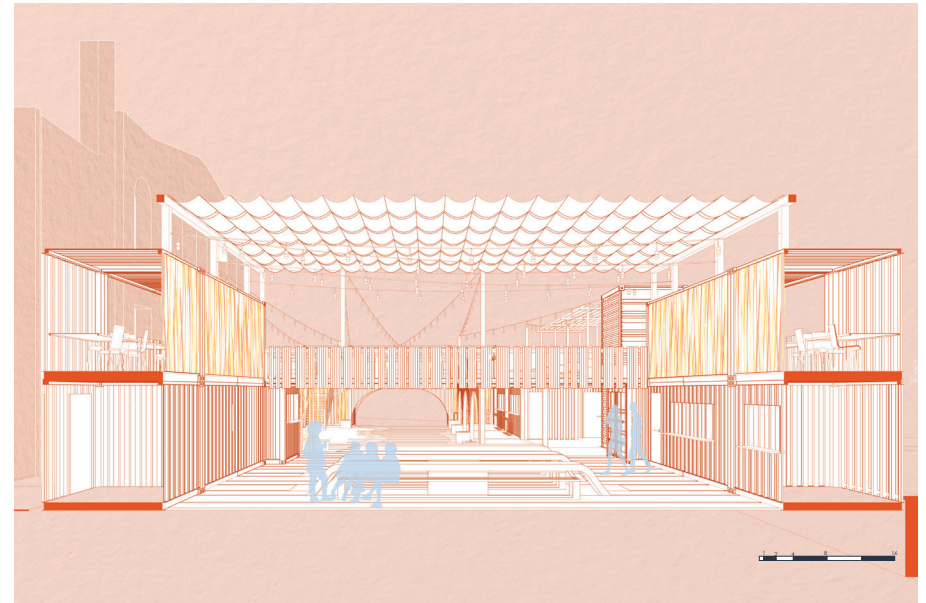
Upper Level



Front Courtyard Section Perspective



Dining Section Perspective



Courtyard Render: 10:00pm

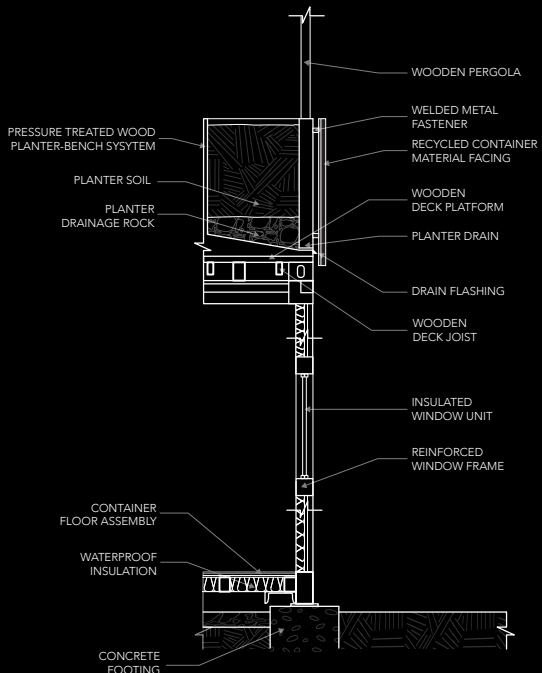


Dining Area Render: 5:00pm

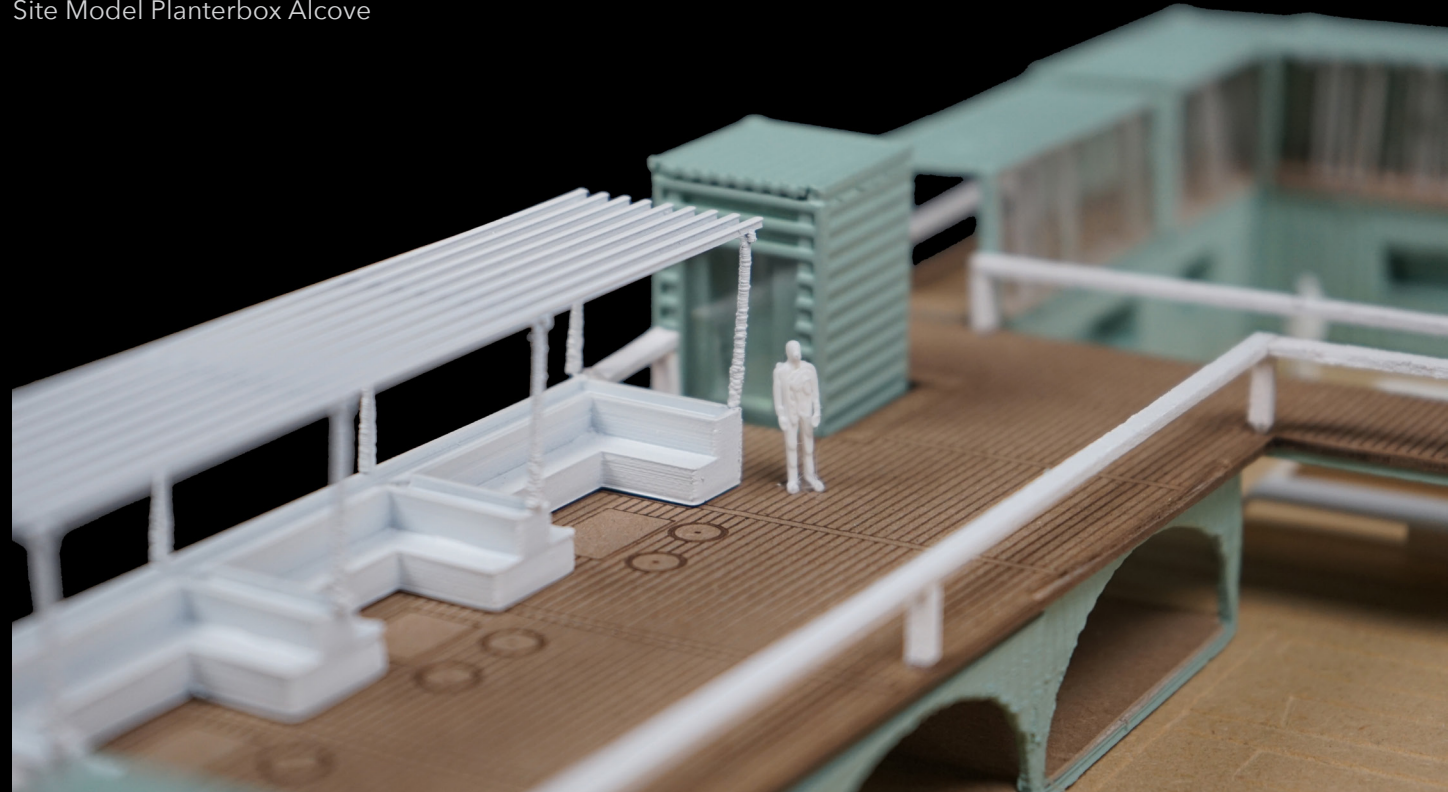
Planterbox Alcove Night Perspective



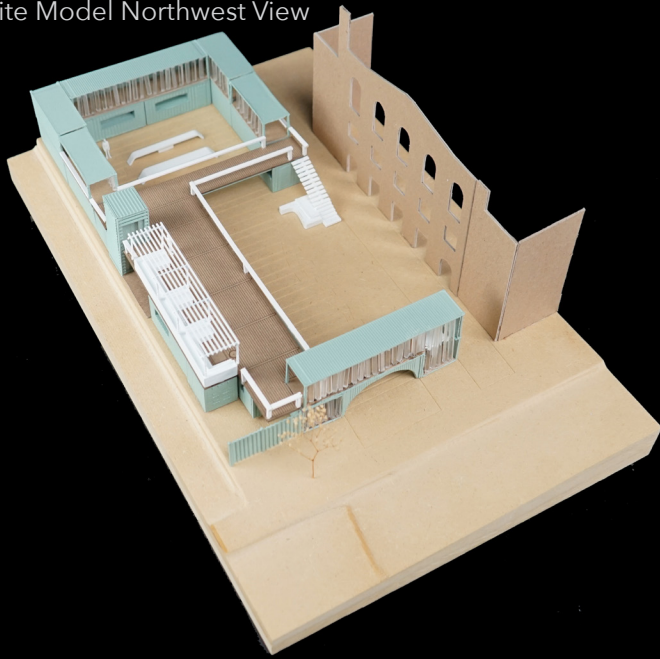
Planter box Alcove Detail



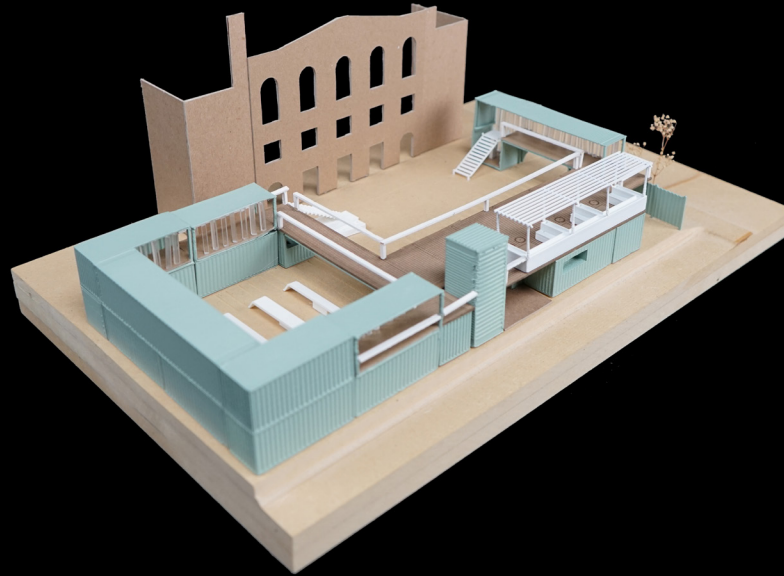
Site Model Planterbox Alcove



Site Model Northwest View



Site Model Southwest View



Front Entrance Street View



